

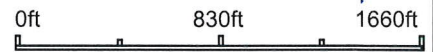
Aerial Map



©2019 AgriData, Inc.



map center: 36° 35' 45.34, -102° 42' 22.58



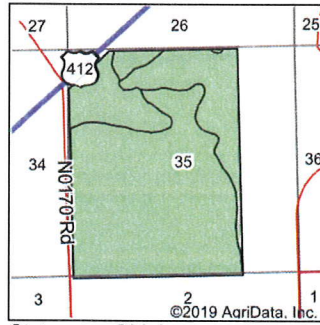
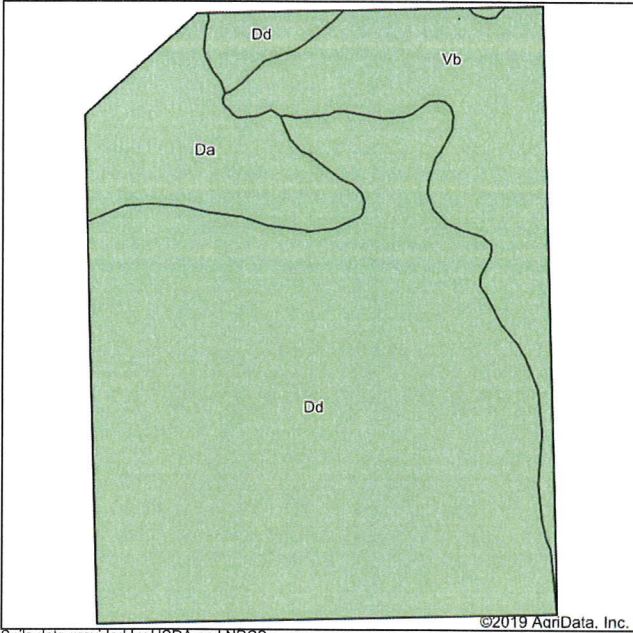
35-2N-3E
Cimarron County
Oklahoma



4/29/2019

Field borders provided by Farm Service Agency as of 5/21/2008. Watershed Boundary Dataset provided by USDA-NRCS, USGS and EPA

Soils Map



State: **Oklahoma**
 County: **Cimarron**
 Location: **35-2N-3E**
 Township: **Keyes**
 Acres: **470.27**
 Date: **4/29/2019**



Maps Provided By:



Soils data provided by USDA and NRCS.

© AgriData, Inc. 2019

www.AgriDataInc.com

Area Symbol: OK025, Soil Area Version: 14

Code	Soil Description	Acres	Percent of field	Non-Irr Class *c	Irr Class *c	Range Production (lbs/acre/yr)	Alfalfa hay Irrigated	Grain sorghum	Grain sorghum Irrigated	Corn Irrigated	Wheat	Wheat Irrigated	Cotton lint	Cotton lint Irrigated	Sorghum silage Irrigated	Barley Irrigated	*n NCCPI Overall	*n NCCPI Corn	*n NCCPI Small Grains	*n NCCPI Soybeans	*n NCCPI Cotton
Dd	Dalhart loamy fine sand, 0 to 3 percent slopes	329.76	70.1%	IIIe	IIIe	1600	5	24	80	144	20	40	360	840			45	20	25	45	36
Vb	Vona-Valent complex, 3 to 5 percent slopes	86.74	18.4%	IVe	IVe	1663	3	1	4	60	8	25		1	27	18	10	12	18	3	
Da	Dalhart fine sandy loam, 0 to 1 percent slopes	53.77	11.4%	IIIc	IIIe	1600	5	24	80	144	20	40	360	840			47	21	26	47	39
Weighted Average						1611.6	4.6	19.8	66	128.5	17.8	37.2	293.6	685.1	0.2	5	*n 40.2	*n 18.3	*n 22.7	*n 40.2	*n 30.3

*n: The aggregation method is "Weighted Average using major components"

*c: Using Capabilities Class Dominant Condition Aggregation Method

Soils data provided by USDA and NRCS.