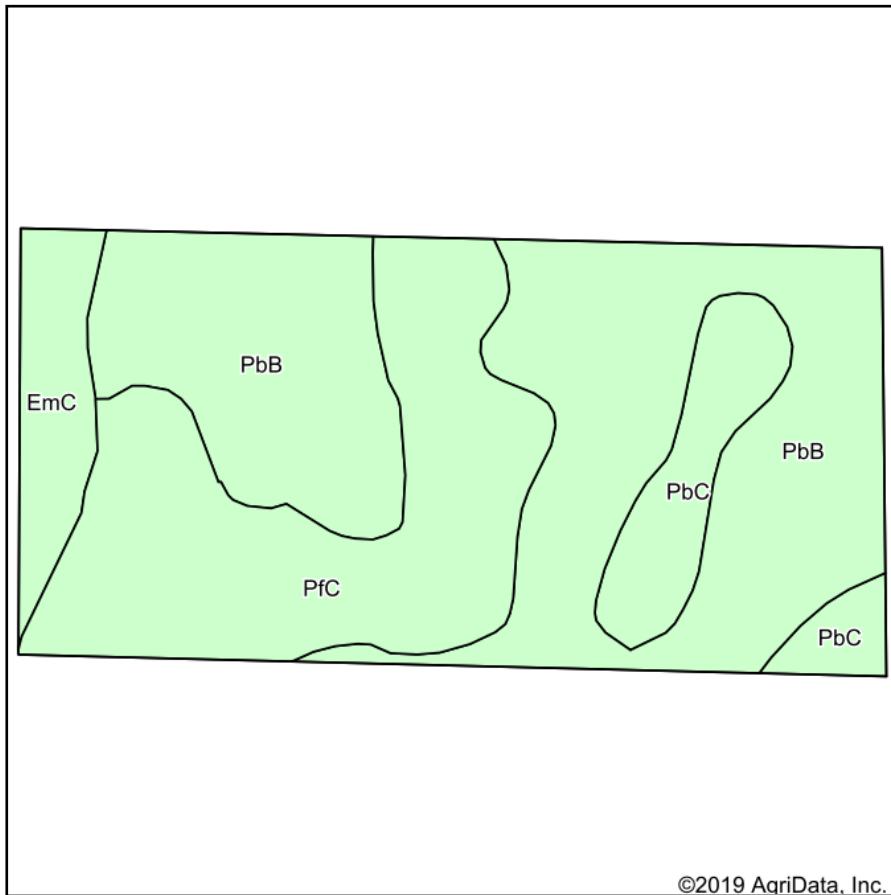
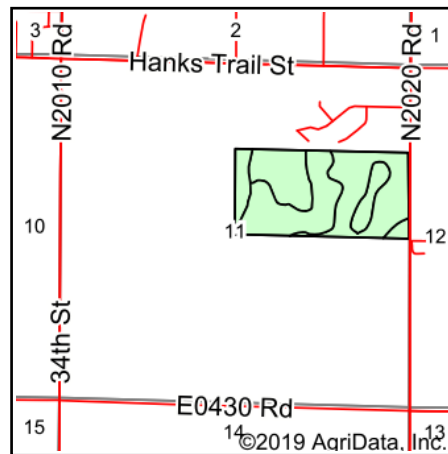


# Soils Map



©2019 AgriData, Inc.

Soils data provided by USDA and NRCS.



State: **Oklahoma**  
 County: **Woodward**  
 Location: **11-22N-21W**  
 Township: **Woodward**  
 Acres: **78.73**  
 Date: **7/11/2019**



Maps Provided By:



© AgriData, Inc. 2019

www.AgriDataInc.com



Area Symbol: OK153, Soil Area Version: 13

| Code                    | Soil Description                             | Acres | Percent of field | Non-Irr Class *c | Irr Class *c | Range Production (lbs/acre/yr) | Annual hay crop Irrigated | Annual hay crop | Grain sorghum | Grain sorghum Irrigated | Improved bermudagrass | Weeping lovegrass | Wheat       | Wheat Irrigated | Alfalfa hay | Alfalfa hay Irrigated |
|-------------------------|--|-------|------------------|------------------|--------------|--------------------------------|---------------------------|-----------------|---------------|-------------------------|-----------------------|-------------------|-------------|-----------------|-------------|-----------------------|
| PbB                     | Devol fine sandy loam, 0 to 3 percent slopes | 41.78 | 53.1%            | IIIe             | IIIe         | 2794                           |                           |                 | 29            | 3                       | 5                     | 6                 | 20          |                 | 4           |                       |
| Pfc                     | Eda sand, 3 to 8 percent slopes              | 24.12 | 30.6%            | IVe              | IVe          | 3915                           |                           |                 | 19            |                         | 4                     | 5                 | 17          |                 | 2           |                       |
| Pbc                     | Devol fine sandy loam, 3 to 8 percent slopes | 7.54  | 9.6%             | IVe              |              | 2763                           | 5                         | 3               | 29            | 3                       | 5                     | 6                 | 20          | 2               |             |                       |
| EmC                     | Hardeman loam, 3 to 5 percent slopes         | 5.29  | 6.7%             | IIIe             | IIIe         | 2775                           | 1                         |                 | 26            | 49                      | 1                     | 5                 | 18          | 39              | 2           |                       |
| <b>Weighted Average</b> |  |       |                  |                  |              | <b>3133.2</b>                  | <b>0.5</b>                | <b>0.3</b>      | <b>25.7</b>   | <b>5.2</b>              | <b>4.4</b>            | <b>5.6</b>        | <b>18.9</b> | <b>2.8</b>      | <b>2.9</b>  | <b>0</b>              |

\*n: The aggregation method is "Weighted Average using major components"

\*c: Using Capabilities Class Dominant Condition Aggregation Method

Soils data provided by USDA and NRCS.