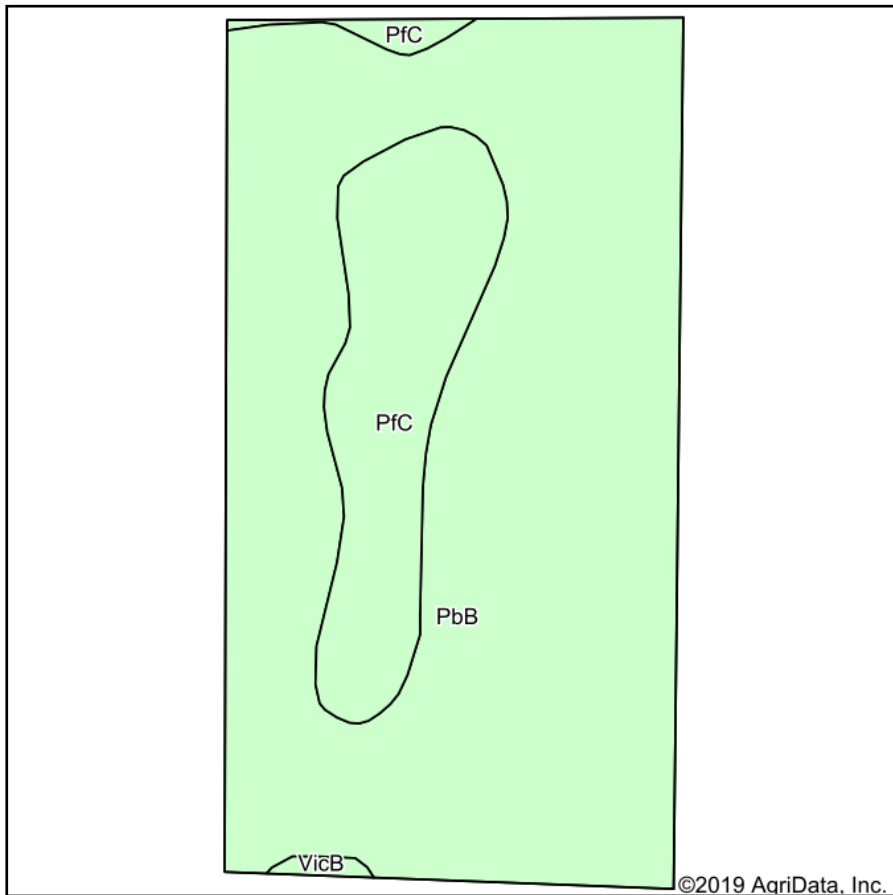
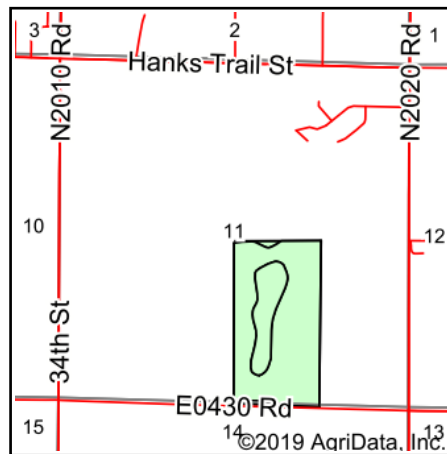


# Soils Map



Soils data provided by USDA and NRCS.



State: **Oklahoma**  
 County: **Woodward**  
 Location: **11-22N-21W**  
 Township: **Woodward**  
 Acres: **75.12**  
 Date: **7/11/2019**



Area Symbol: OK153, Soil Area Version: 13

Code	Soil Description	Acres	Percent of field	Non-Irr Class *c	Irr Class *c	Range Production (lbs/acre/yr)	Corn Irrigated	Small grains grazeout	Improved bermudagrass	Sorghum grazed	Weeping lovegrass	Winter wheat	Winter wheat Irrigated	Grain sorghum	Grain sorghum Irrigated	Al ha
PbB	Devol fine sandy loam, 0 to 3 percent slopes	61.64	82.1%	IIIe	IIIe	2794			5		6			29	3	
PfC	Eda sand, 3 to 8 percent slopes	13.16	17.5%	IVe	IVe	3915		2	4	3	5			19		
VicB	Vici sand, 0 to 3 percent slopes	0.32	0.4%	IVe	IIIe	2132	66	2	3	2	4	15	33	16	49	
<b>Weighted Average</b>						<b>2987.6</b>	<b>0.3</b>	<b>0.4</b>	<b>4.8</b>	<b>0.5</b>	<b>5.8</b>	<b>0.1</b>	<b>0.1</b>	<b>27.2</b>	<b>2.7</b>	

\*n: The aggregation method is "Weighted Average using major components"

\*c: Using Capabilities Class Dominant Condition Aggregation Method

Soils data provided by USDA and NRCS.