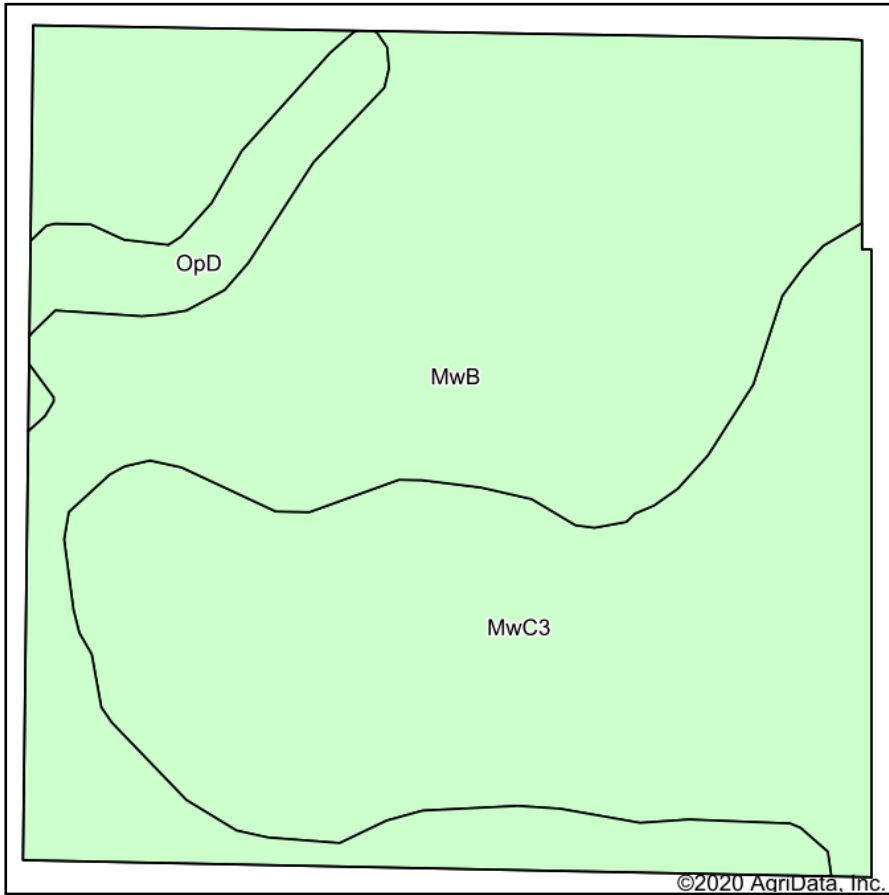
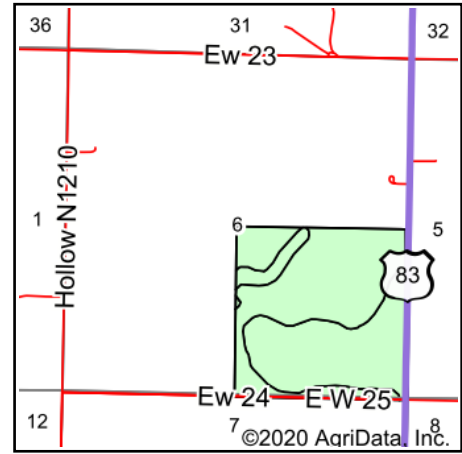


Soils Map



Soils data provided by USDA and NRCS.



State: **Oklahoma**
 County: **Beaver**
 Location: **6-2N-21E**
 Township: **South Beaver**
 Acres: **160.68**
 Date: **12/9/2020**



Maps Provided By:



Code	Soil Description	Acres	Percent of field	Non-Irr Class *c	Irr Class *c	Range Production (lbs/acre/yr)	Alfalfa hay Irrigated	Corn Irrigated	Grain sorghum	Grain sorghum Irrigated	Introduced bluestem	Sorghum hay	Wheat	Wheat Irrigated	*n NCCPI Overall	*n NCC Corn
MwB	Mansic-Woodward complex, 1 to 3 percent slopes	88.37	55.0%	IIIe	IIIe	2738	4	65	26	69	3	3	20	38	55	
MwC3	Mansic-Woodward complex, 3 to 5 percent slopes, eroded	64.81	40.3%	IIIe		75			2		2		17		46	
OpD	Mobeetie-Devol complex, 3 to 12 percent slopes	7.50	4.7%	VIe		2392						3			38	
Weighted Average						1647.7	2.2	35.7	15.1	37.9	2.6	1.6	17.9	20.9	*n 50.6	*n 2

*n: The aggregation method is "Weighted Average using all components"

*c: Using Capabilities Class Dominant Condition Aggregation Method

Soils data provided by USDA and NRCS.