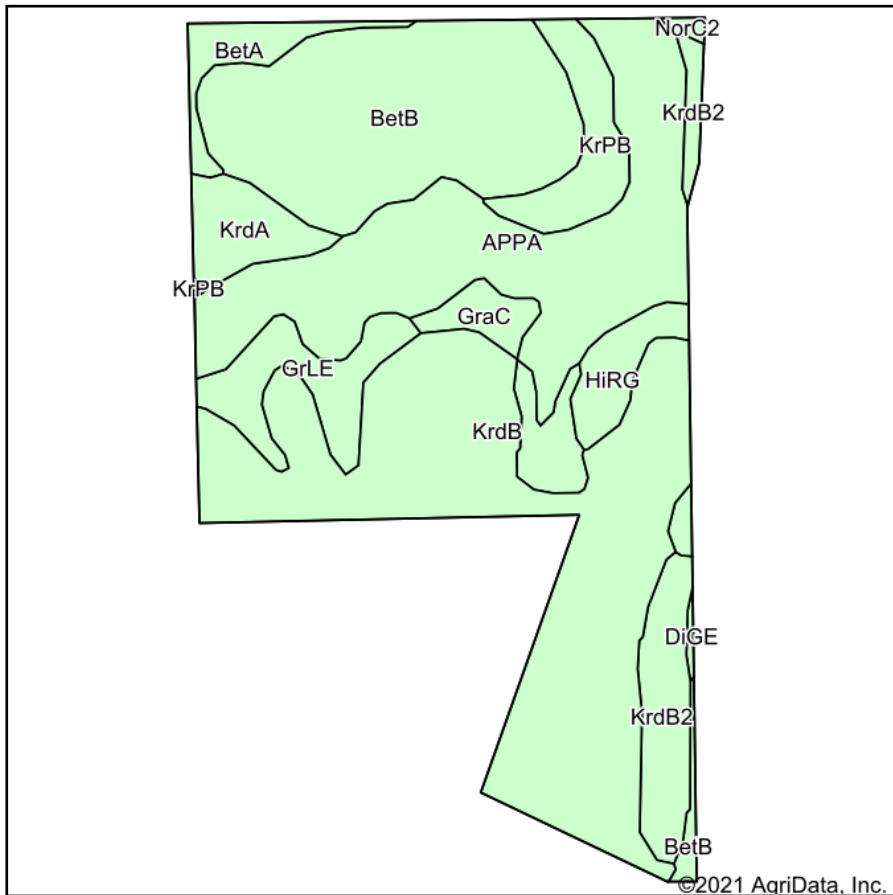
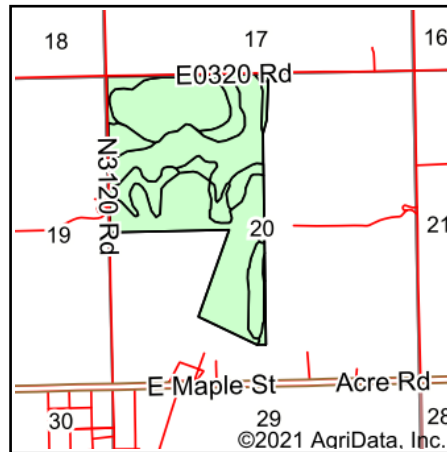


# Soils Map



Soils data provided by USDA and NRCS.



State: **Oklahoma**  
 County: **Noble**  
 Location: **20-24N-2W**  
 Township: **Billings**  
 Acres: **197.67**  
 Date: **2/3/2021**



Maps Provided By:



© AgriData, Inc. 2021

www.AgriDataInc.com



Code	Soil Description	Acres	Percent of field	Non-Irr Class *c	Irr Class *c	Range Production (lbs/acre/yr)	Alfalfa hay	Barley	Cantaloupe	Caucasian bluestem	Cotton lint	Grain sorghum	Improved bermudagrass	Introduced bluestem	Oats	
KrdB	Kirkland silt loam, 1 to 3 percent slopes	63.59	32.2%	Ils	Ils	3926		2			50	34		4	5	32
APPA	Ashport, Port, and Pulaski soils, 0 to 1 percent slopes, frequently flooded	41.86	21.2%	Vw		6247								8		
BetB	Bethany silt loam, 1 to 3 percent slopes	40.00	20.2%	Ile	Ile	4633		2			302	44		5	5	2
KrdB2	Kirkland silt loam, 1 to 3 percent slopes, eroded	14.46	7.3%	IIle		0		1			33	5		4	1	
GrLE	Grainola-Lucien complex, 5 to 12 percent slopes	9.39	4.8%	VIle		3616						1		3		3
KrPB	Kirkland-Pawhuska complex, 0 to 3 percent slopes	7.89	4.0%	Ils	Ils	3673		2		1	51	27		4	4	23



KrdA	Kirkland silt loam, 0 to 1 percent slopes, cool	6.28	3.2%	Ils	Ils	3890		4		22	35	4	5	34	
HiRG	Highview-Rock outcrop complex, 15 to 45 percent slopes	5.73	2.9%	Vlle		1321									
BetA	Bethany silt loam, 0 to 1 percent slopes	4.50	2.3%	Ils	Ile	4633		2		276	44	5	5	2	
GraC	Grainola silty clay loam, 3 to 5 percent slopes	3.18	1.6%	Ille		3724		1			16	2	3	1	
NorC2	Norge silt loam, 3 to 5 percent slopes, eroded	0.48	0.2%	Ille		300	2		9	255	35	5	4		
DiGE	Dilworth-Grainola complex, 5 to 12 percent slopes	0.31	0.2%	Vle		3631						3			
<b>Weighted Average</b>						<b>4175.5</b>	<b>*-</b>	<b>1.4</b>	<b>*-</b>	<b>*-</b>	<b>89.2</b>	<b>23.8</b>	<b>4.9</b>	<b>3.3</b>	<b>12.8</b>

\*n: The aggregation method is "Weighted Average using all components"

\*c: Using Capabilities Class Dominant Condition Aggregation Method

Soils data provided by USDA and NRCS.