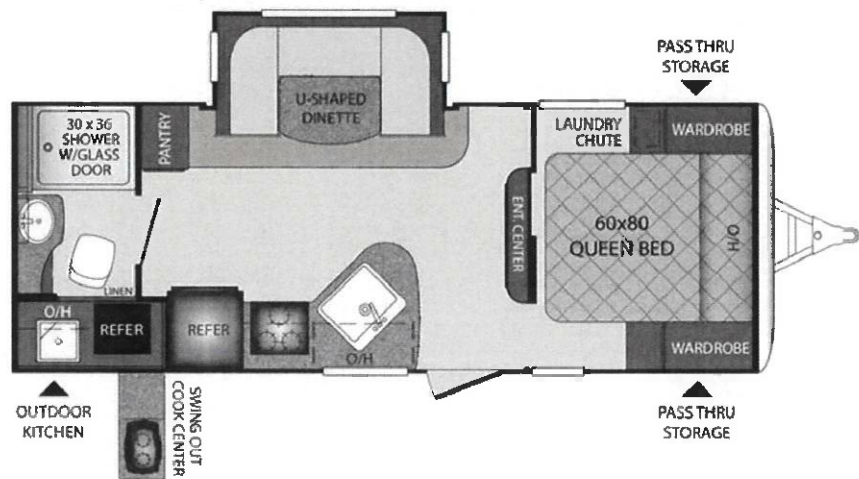




EDIT LISTINGS
MYRVUSA
SELL MY RV!

Specs for 2018 Keystone - Premier Floorplan: 22RBPR (Travel Trailer)



View 2018 Keystone Premier (Travel Trailer) RVs For Sale

Help me find my perfect Keystone Premier RV

Specifications

Price

MSRP

TBA

MSRP + Destination

TBA

Currency

US Dollars

Basic Warranty (Months)

12

Structure Warranty (Months)

12

Roof Warranty (Years)

12

→ *Need to know your payment? Use our RV Loan Calculator!***Dimensions****Length**

26.42 ft. (317 in.)

Width

8 ft. (96 in.)

Height

11 ft. (132 in.)

Interior Height

6.92 ft. (83 in.)

Weight**Dry Weight**

4,885 lbs.

Payload Capacity

1,615 lbs.

GVWR

6,500 lbs.

Hitch Weight

595 lbs.

Holding Tanks**Number Of Fresh Water Holding Tanks**

1

Total Fresh Water Tank Capacity

43.0 gal.

Number Of Gray Water Holding Tanks

1

Total Gray Water Tank Capacity

30.0 gal.

Number Of Black Water Holding Tanks

1

Total Black Water Tank Capacity

30.0 gal.

Propane Tank(s)

Number Of Propane Tanks

2

Total Propane Tank Capacity

9.4 gal.

Total Propane Tank Capacity

40 lbs.

Construction

Body Material

Aluminum

Sidewall Construction

Fiberglass

Doors

Number of Doors

1

Sliding Glass Door

No

Slideouts

Number of Slideouts

1

Power Retractable Slideout

Yes

Awning

Number of Awnings

1

Awning Length

15 ft. (180 in.)

Power Retractable Awning

Yes

Screened Room

No

2018 Keystone Premier RVs for Sale Near You



New 2021 Keystone Premier 30RIPR

✉ Get Price Info



Used 2020 Keystone Premier 26RBPR

\$31,995.00



New 2021 Keystone Premier 26RBPR

\$49,534.00



New 2022 Keystone Premier 30RIPR

\$42,900.00

Leveling Jacks

Leveling Jack Type

Front Manual / Rear Manual

Kitchen / Living Area

Kitchen / Living Area Flooring Type

Carpet / Vinyl

Kitchen Table Configuration

U-shaped Dinette

Kitchen Location

Center

Living Area Location

Center

Oven / Stove

Layout

Oven / Stove

Number Of Oven Burners

3

Oven Depth

1.42 ft. (17 in.)

Overhead Fan

Yes

Refrigerator

Refrigerator Size

Mid-Size

Refrigerator Power Mode

Electric / Propane

Sofa

Number Of Sofas

0

Reclining Sofa

No

AdChoices 

Recliners / Rockers

Number Of Recliner / Rockers

0

Beds

Max Sleeping Count

4

Number Of Bunk Beds

0

Number Of Double Beds

0

Number Of Full Size Beds

0

Number Of Queen Size Beds

1

Number Of King Size Beds

0

Number Of Convertible / Sofa Beds

1

Master Bedroom

Master Bedroom Flooring Type

Vinyl

Master Bedroom Door Style

Full Sliding Door

Full Size Master Bedroom Closet

No

Master Bedroom Mirror Doors

No

Master Bedroom Shades / Curtains

Yes

Master Bedroom Location

Front

Bunkhouse

No

Bathroom**Number Of Bathrooms**

1

Bathroom Flooring Type

Vinyl

Bathroom Location

Rear

Toilet**Toilet Type**

Plastic

Shower**Door Type**

Plastic / Glass

Wheels**Wheels Composition**

Aluminum

Number Of Axles

2

Tires**Rear Tire (Full Spec)**

205/75R 14C

Spare Tire**Spare Tire Location**

Exterior Mounted

Brakes**Rear Brake Type**

Electric Drum

Battery**Battery Power Converter**

Yes

Prewiring**Air Conditioning Prewiring**

Yes

Cable Prewiring

Yes

Phone Prewiring

No

Heat Prewiring

Yes

TV Antenna Prewiring

Yes

Satellite Prewiring

No

Washer / Dryer Prewiring

No

Air Conditioning

Air Conditioning Type

Automatic

Air Conditioning

13,500 BTUs

Heater

Heater Type

Automatic

Heater

30,000 BTUs

Water Heater Tank

Water Heater Tank Capacity

6 g

Water Heater Pump Power Mode

Electrical / Propane

Water Heater Tank Bypass

Yes

Radio

Number Of Radios

1

Satellite

No

Speakers

Speaker Location(s)

Interior / Exterior

Surround Sound

No

CD Player

Number Of Discs

1

Television

Number Of Televisions

1

Paint

Primary Color

Tan

Secondary Color

Black

Metallic

No

Paint Swatch File Name

Keystone/Champagne_-_Black_Exterior_Color.gif

Interior Decor

Wallpaper

Yes

Interior Wood Finish

Yes

Upgraded Mattress

Heated

No



Keystone Premier RVs for Sale Near You

Help me find my perfect Keystone Premier RV

EASTERN
EDITION

BULLET

CROSSFIRE | Ultra Lite



CROSSFIRE | BULLET | PREMIER

PREMIER

— ULTRA LITE BY BULLET —



Keystone RV
Company

BUILDING A LEGACY



**Keystone RV
Company**

When Cole Davis founded Keystone RV in 1996 his vision was clear: Build a quality RV loaded with features priced thousands less than other RVs on the market. To accomplish his goal, Cole built a strong team, focused on keeping overhead low, and empowered employees closest to the customer to make decisions. Within a few short months after opening the doors, Keystone produced its very first camper. Delivering big on quality, features and value, the public fell in love and a star was born.

As customers appetite skyrocketed, new Keystone models were added to satisfy growing customer demand. Along with this tremendous growth came the need for expanded production. To meet this need, more manufacturing plants were built and staffed. By the beginning of 2000, Keystone was leading the industry in fifth wheel and travel trailer sales. Today, Keystone RV Company has grown to encompass over 1 million square feet of manufacturing space with facilities in Goshen, Indiana and Pendleton, Oregon. While Keystone is no longer the small "start up" we once were, our mission has remained true to Cole's vision—"Do the job right and make sure we deliver a quality product every time."



THE COMPLETE CHOICE

FOR MORE INFORMATION ON KEYSTONE RV VISIT WWW.BIT.LY/10A00LK

BULLET

FROM THE BEGINNING, THE VISION HAS BEEN SIMPLE: PROVIDE CUSTOMERS AN ULTRA LITE TRAVEL TRAILER WITH UNSURPASSED QUALITY AND VALUE.

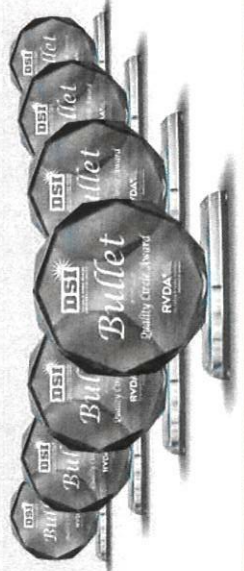
In 2009, this became reality with the Keystone Bullet. After extensive market research, rigorous product development and design the first Bullet Ultra Lite was constructed. In a few short years, Bullet Ultra Lite grew from its humble beginnings to become the #1 ultra lite travel trailer in North America.

Shortly thereafter, Keystone RV launched Premier – the industry's first luxury ultra lite. Staying true to its roots, Premier took the ultra lite segment to the next level. Still unrivaled today, Premier provides more luxury features than any other ultra lite. Bullet's innovation continued in 2015 with the launch of Bullet Crossfire. The inspiration for Bullet Crossfire arose from the need for even smaller and lighter travel trailers. **Today, the vision remains the same.**

TRUSTED RESULTS

BULLET #1

#1 ULTRA LITE TRAVEL TRAILER IN NORTH AMERICA



RVDA QUALITY CIRCLE AWARD RECIPIENT 7 YEARS

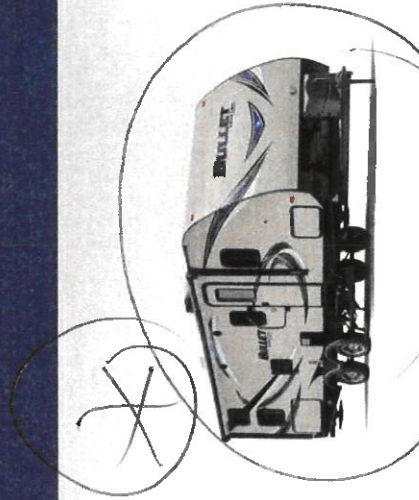
TABLE OF CONTENTS



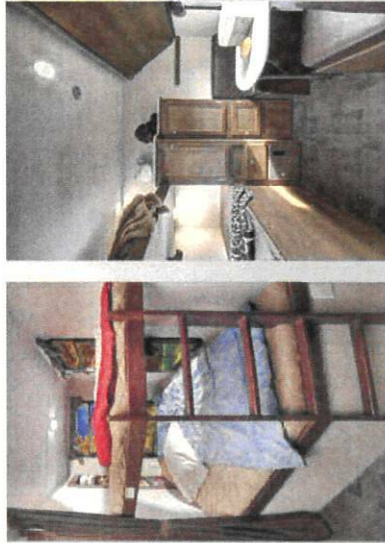
BULLET CROSSFIRE TRAVEL TRAILERS



PAGES 3-4



BULLET ULTRA LITE TRAVEL TRAILERS



PAGES 5-10



PREMIER ULTRA LITE TRAVEL TRAILERS



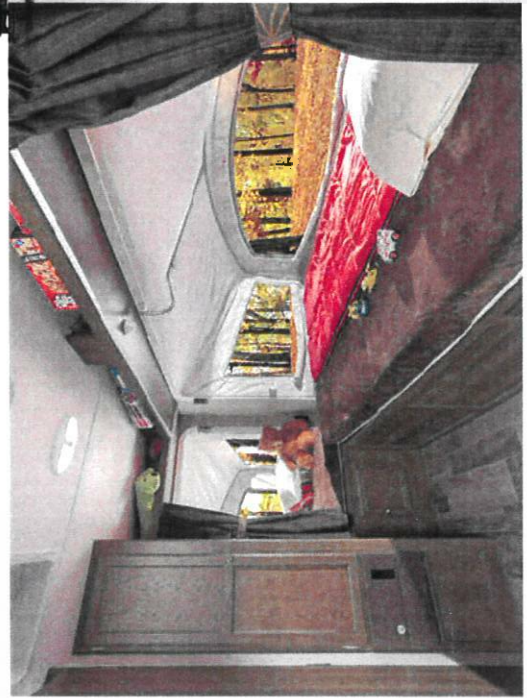
PAGES 11-16

BULLET CROSSFIRE

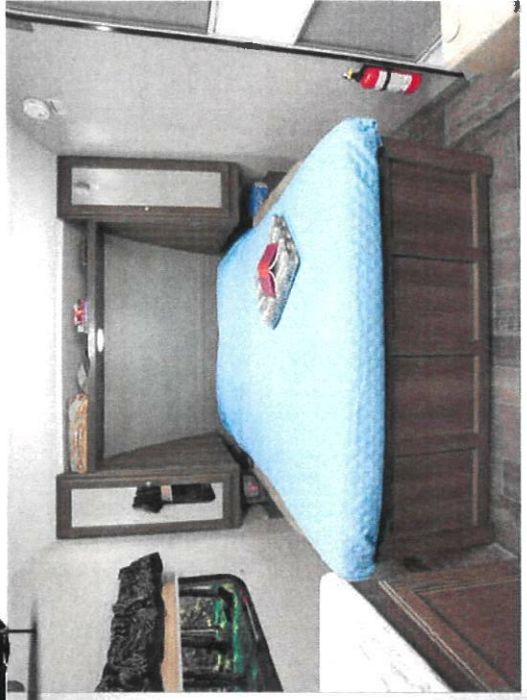


2190EX SHOWN IN SADDLEBROOK DECOR

BULLET CROSSFIRE TRAVEL TRAILERS



2190EX BUNK AREA



1800RB MURPHY BED SHOWN IN BED POSITION

BULLET CROSSFIRE TOP FEATURES:

- 13,500 BTU Roof A/C
- Electric Awning
- Two 20 lb. Propane Tanks w/Cover
- Spare Tire
- LED Lighting
- 6 cu. ft. Refrigerator
- Night Shades
- 9" Deep Single Basin Sink
- Full Bath w/Shower Surround

3 BULLET CROSSFIRE GIVES YOU ALL OF THE CAMPING EXPERIENCE WITHOUT THE LARGE PRICE.



BULLET

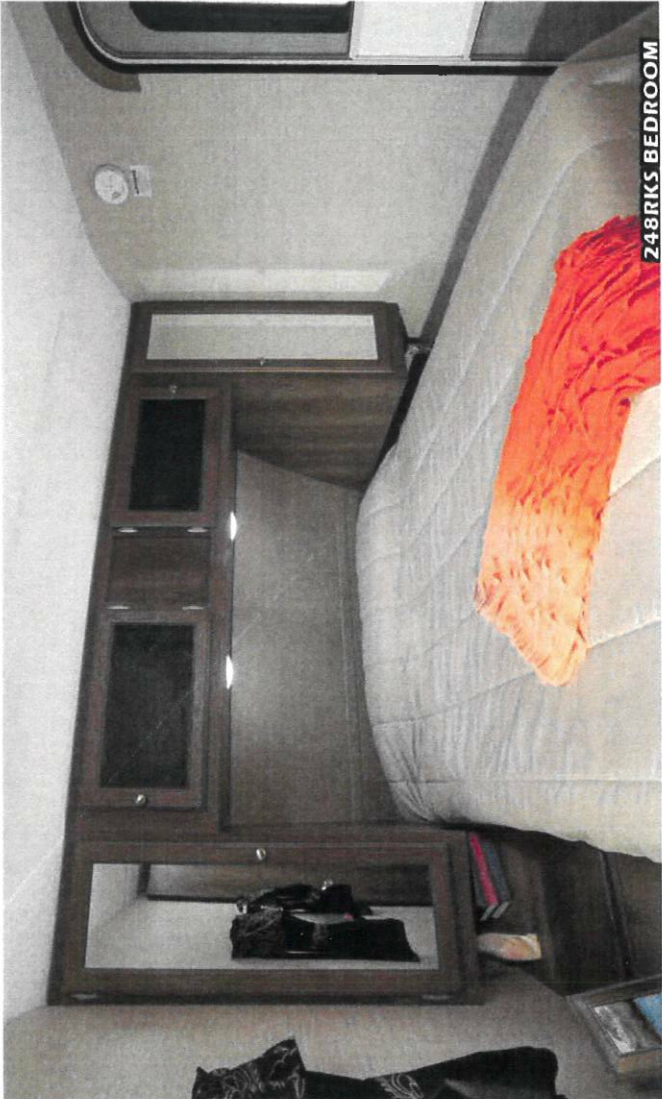
Ultra Lite

269RLS SHOWN IN GUNMETAL DECOR



EASY TO TOW WITH THE NEW MORE FUEL EFFICIENT CROSSOVERS, CARS AND TRUCKS; THE BULLET ULTRA LITE TRAVEL TRAILER HERALDS IN A NEW GENERATION OF RVs.

Sleek and smooth on the outside and loaded with features and conveniences inside, the Bullet Ultra Lite will set you free to explore the open road.



248RLS BEDROOM

BULLET ULTRA LITE EXTERIOR FEATURES

5 YEAR WARRANTY
ON BGS EXTERIOR GRAPHICS
WARRANTY
3 YEAR WARRANTY ON BGS EXTERIOR GRAPHICS IN AZ, CA, FL, NV, NM, TX, UT



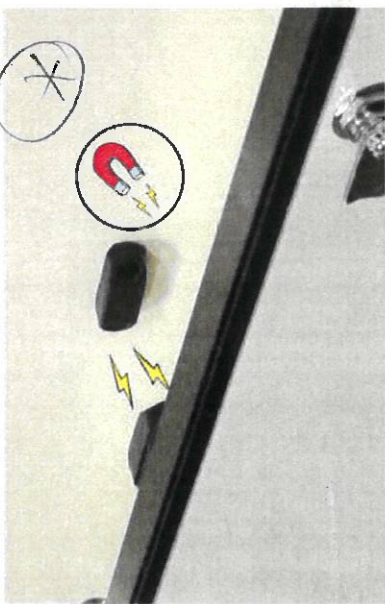
3 Year Warranty on BGS Exterior Graphics in AZ, CA, FL, NV, NM, TX, UT



Outside Kitchen (243BHS, 277BHS, 287QBS, 308BHS, and 311BHS)



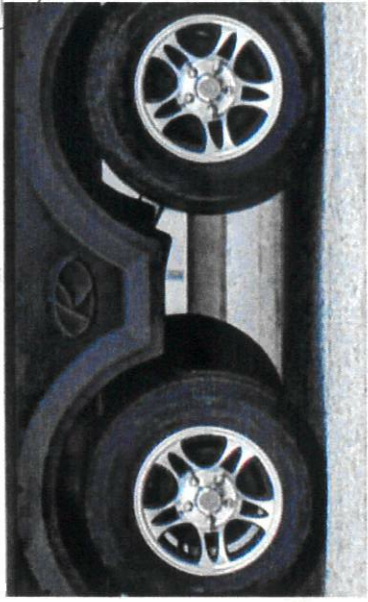
Enclosed Underbelly with Ducted Heat



Magnetic Baggage Door Catches



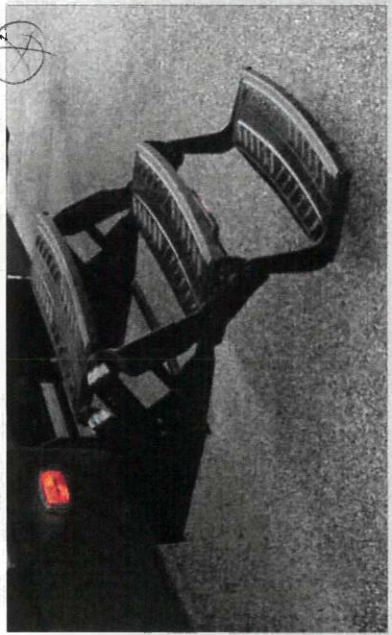
Power Awning with LED Lights



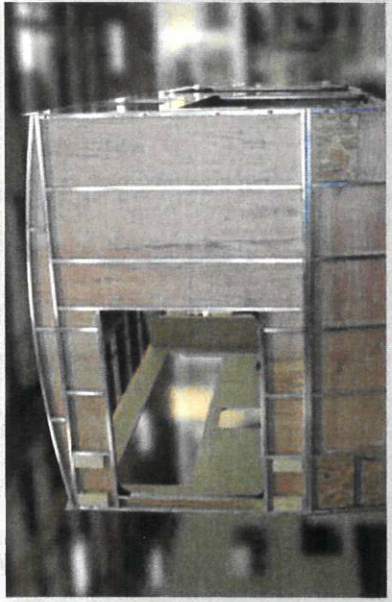
43" Wide Stance Dexter Axles



Black Tank Flush

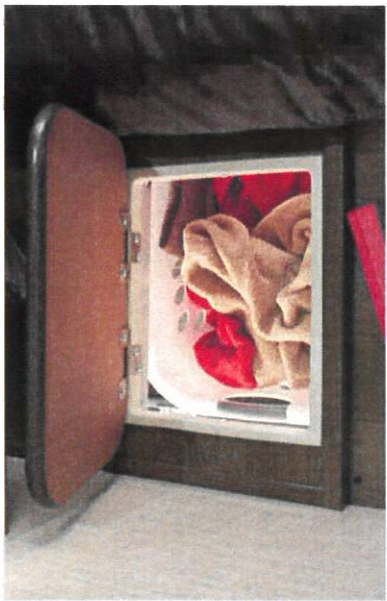


Triple 9" Easy Entrance Steps



Aluminum Framing Throughout (including slide boxes, pass-thru storage)

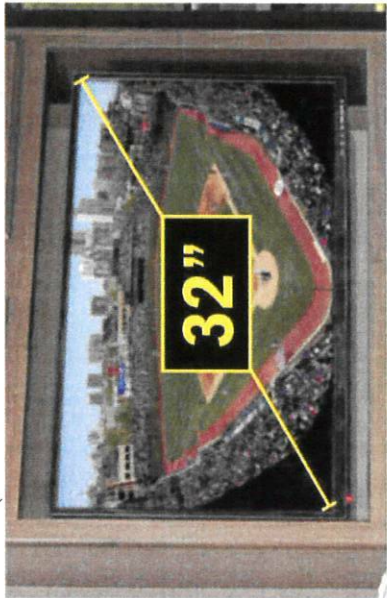
BULLET ULTRA LITE INTERIOR FEATURES



Laundry Chute in Master Bedroom



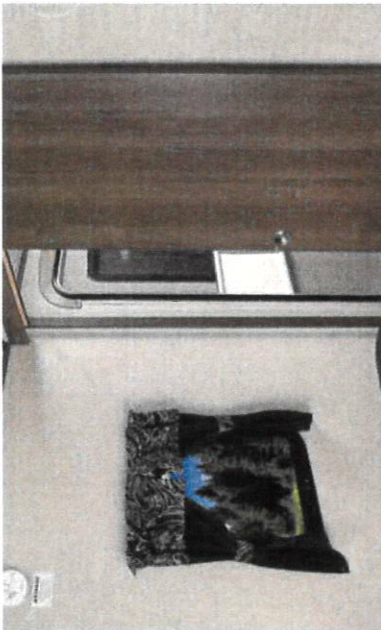
Flush Mount Range with Glass Top



32" LED TV in Main Living Area



Storage Doors Underneath Dinette Seating



Solid Wood Entry Doors to Bedroom and Bunkrooms



Super Slides with Four Windows



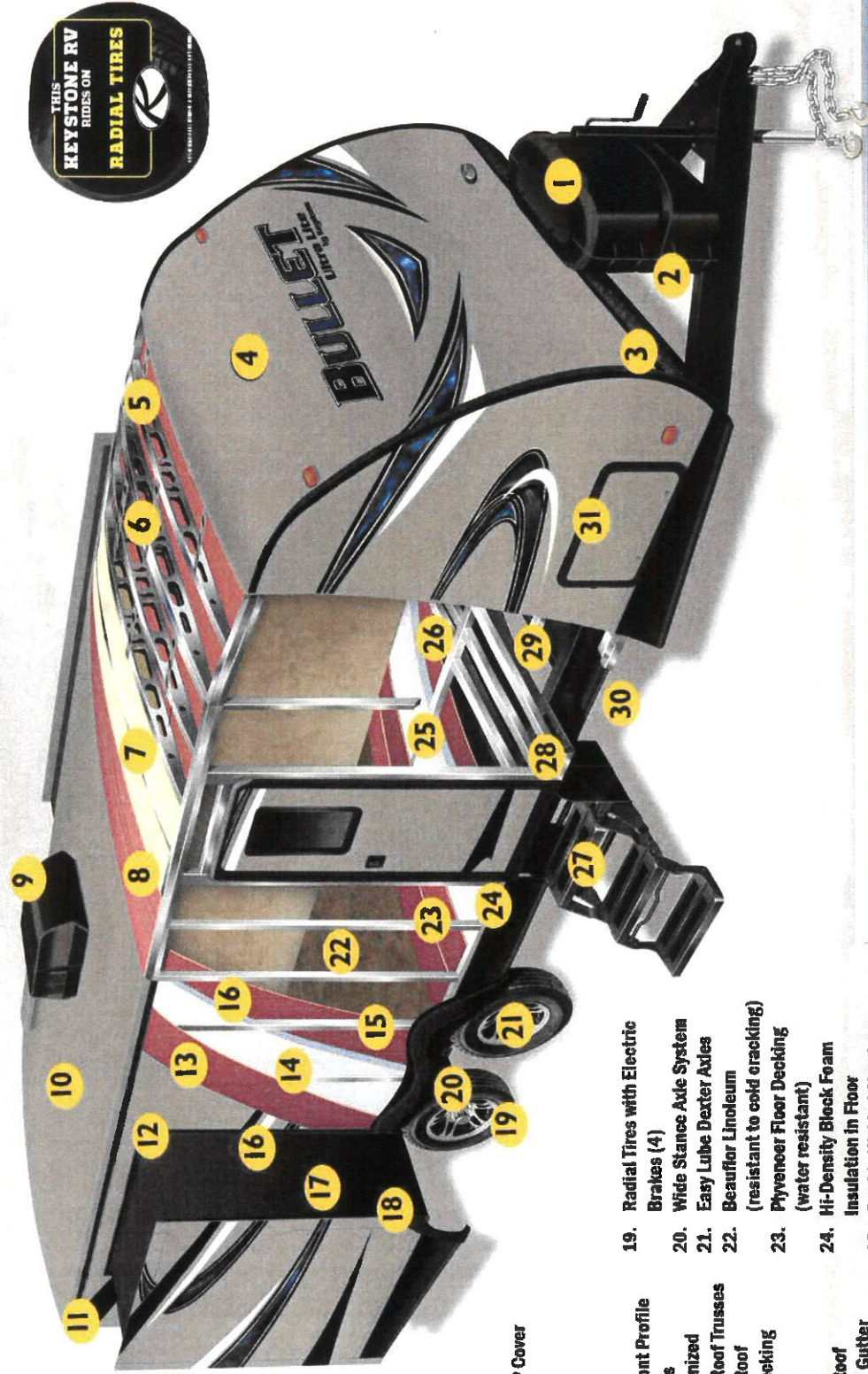
9" Deep Single Basin Kitchen Sink (N/A 220RBI, 311BHS, and 330BHS)



30,000 BTU Ducted Furnace



BULLET ULTRA LITE CONSTRUCTION

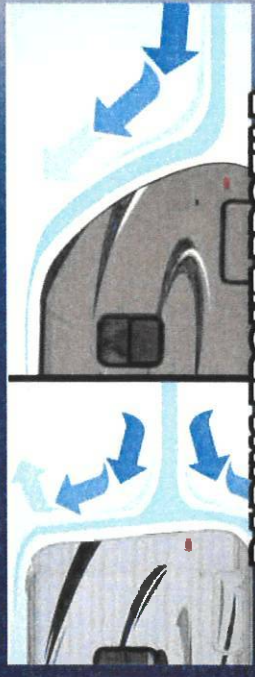


- | | |
|--|--|
| 1. Quick Access LP Cover | 19. Radial Tires with Electric Brakes (4) |
| 2. Integrated Dual Battery Tray | 20. Wide Stance Axle System |
| 3. Diamond Plate Stone Guard | 21. Easy Lube Dexter Axles |
| 4. Aerodynamic Front Profile | 22. Beauflor Linoleum (resistant to cold cracking) |
| 5. Hurricane Straps | 23. Phynoeer Floor Decking (water resistant) |
| 6. 5" Radius Galvanized Stamped Steel Roof Trusses | 24. Hi-Density Block Foam Insulation in Floor |
| 7. Fully Insulated Roof | 25. Double Welded Aluminum Floor Joists |
| 8. Durable Roof Decking | 26. 3rd Layer Floor Decking |
| 9. 13.5 Quick Cool Air Conditioner | 27. Radius Triple Entry Steps |
| 10. One Piece TPO Roof | 28. 7.5" - 10.5" Steel Z-Beam Norco Frame |
| 11. Full Length Rain Gutter and 4" Drip Spouts | 29. Dargo Moisture Barrier Wrap |
| 12. Smooth Fiberglass Exterior | 30. Heated and Enclosed Underbelly |
| 13. 1/8" Luan Wall Backing | 31. Aluminum Framed Pass-Thru Storage |
| 14. Hi-Density Block Foam Insulation | |
| 15. 1 1/2" Box Welded Aluminum Frame Structure | |
| 16. Decorative Interior Wall Board | |
| 17. Aluminum Frame Slide Boxes | |
| 18. Bullet's Multi Seal and Track Slide System | |



SAVE MONEY ON FUEL

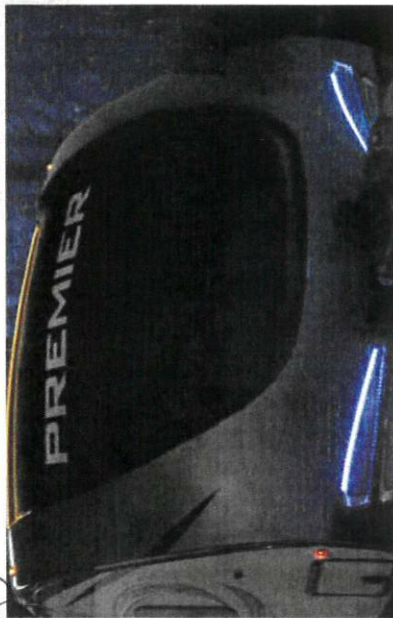
Our lightweight floor plans are 1000-1500 lbs. lighter than comparable competitor's trailers.



RADIUS FRONT PROFILE VS. COMPETITION

The radius front profile of the Bullet travel trailer gives the optimal contour to reduce wind resistance when traveling down the road.

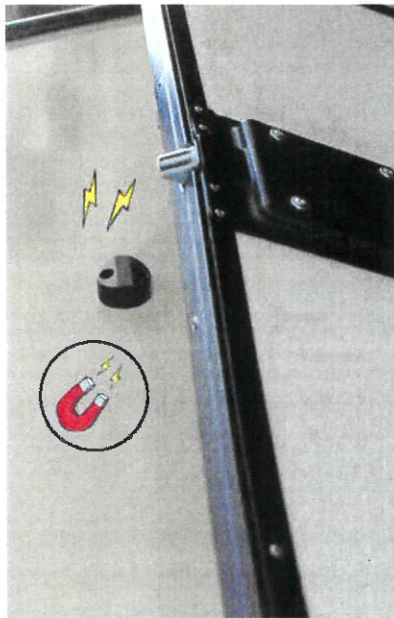
PREMIER EXTERIOR FEATURES



Full Fiberglass Automotive Painted Cap with LED Docking Lights



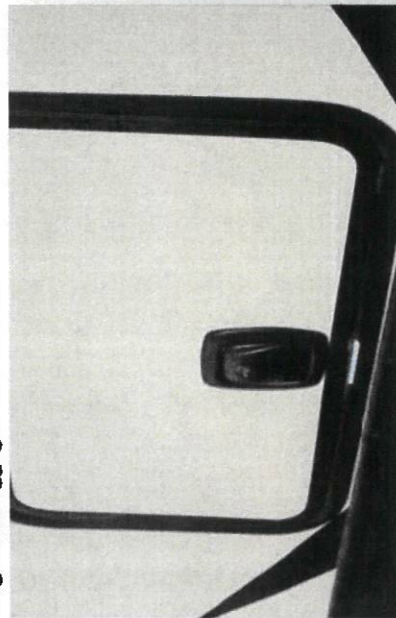
Tinted Framelless Privacy Windows



Magnetic Baggage Door Catches



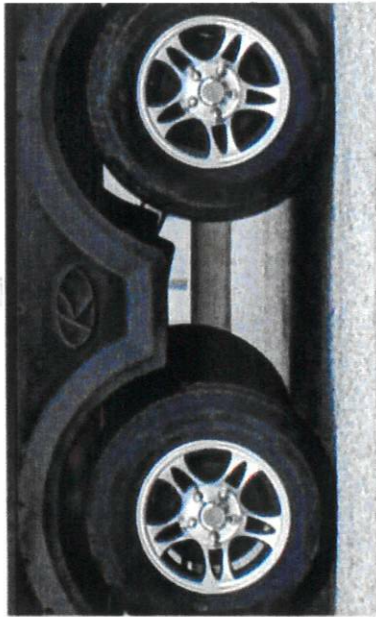
Power Awning with LED Lights



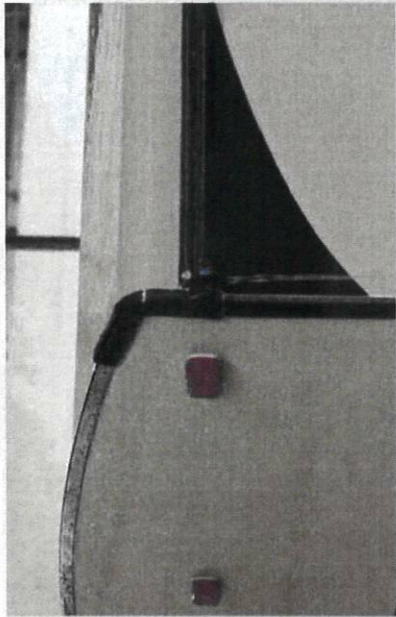
Slam Latch Baggage Doors



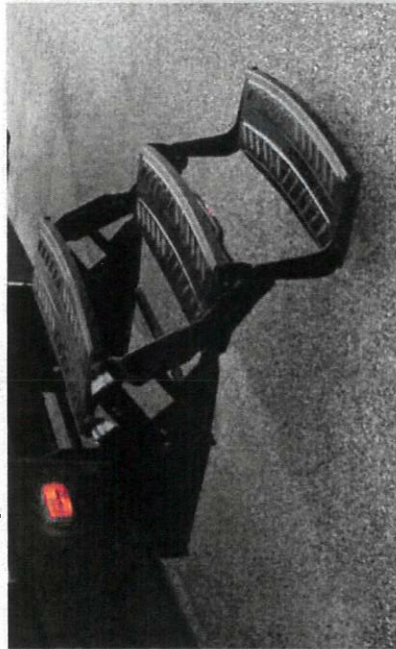
Enclosed Underbelly with Ducted Heat



43" Wide Stance Dexter Axles



TPO Roll Over Roof



Triple 9" Easy Entrance Steps

PREMIER INTERIOR FEATURES



Vaulted Ceiling



Stor-Mor Drawers Under Booth Dinette



Laundry Chute in Master Bedroom



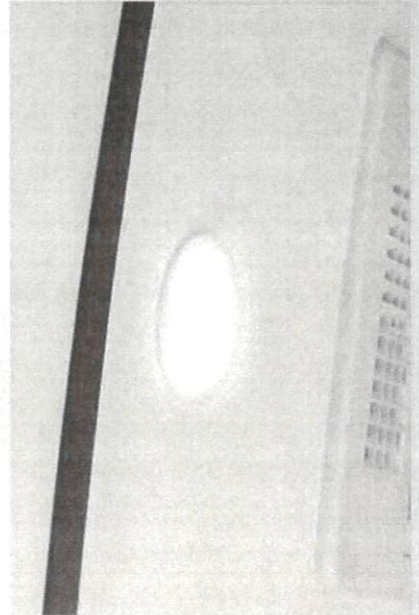
LG Solid Surface Countertops in Kitchen



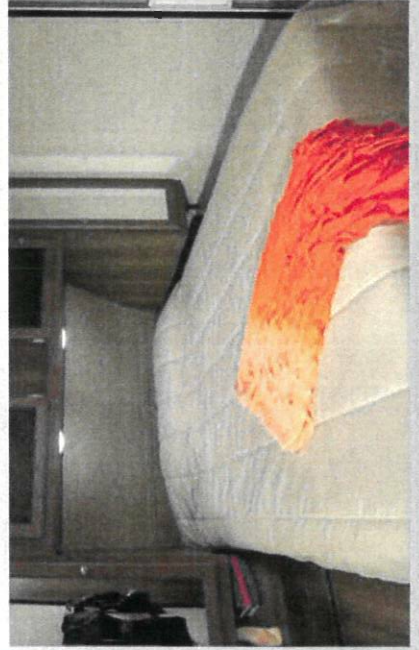
8 cu. ft. Refrigerator



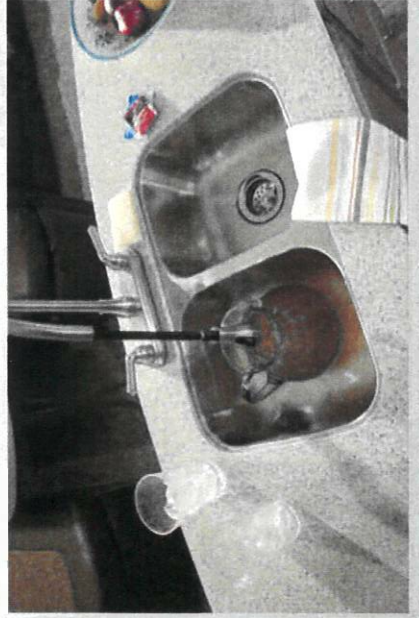
Residential Backsplash in Kitchen



LED Puck Lights



60" x 80" Residential Queen Size Beds



Stainless Steel Dual Basin Sink w/ Pull-Down Sprayer Faucet

PREMIER CONSTRUCTION

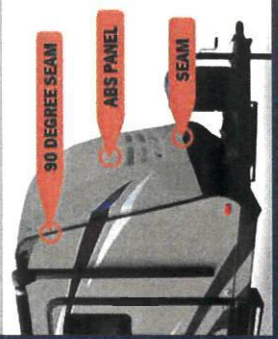
Keystone's multi-coat paint facility applies three layers of base coat followed by two layers of automotive clear coat. This results in a deeper color & shinier finish than the competitors dyed fiberglass or ABS caps.



1. Power Tongue Jack
2. Quick Access LP Cover
3. Integrated Dual Battery Tray
4. LED Docking Lights
5. Radius Fiberglass Front Cap
6. 5" Radius Galvanized Stamped Steel Roof Trusses
7. Hurricane Straps
8. Fully Insulated Roof
9. Durable Roof Decking
10. One Piece TPO Roof
11. 13,500 BTU Quick Cool Air Conditioning (optional 2nd 13,500 BTU A/C)
12. Full Length Rain Gutter and 4" Drip Spouts
13. Rolled Roof Edge
14. Smooth Fiberglass Exterior
15. 1/8" Luan Wall Backing
16. Hi-Density Block Foam Insulation
17. 1 1/2" Box Double Welded Aluminum Frame Structure
18. Decorative Interior Wall Board
19. Residential Stain Resistant Beaufort Linoleum (resistant to cold cracking)
20. Plyveneer Floor Decking (water resistant)
21. Hi-Density Block Foam Insulation in Floor
22. Double Welded Aluminum Floor Joists
23. 3rd Layer Floor Decking
24. 7.5" - 10.5" Steel Z-Beam Frame
25. Darco Vapor Barrier Wrap Heated and Enclosed Underbelly
26. Radial Tires with Electric Brakes (4)
27. 43" Wide Stance Axles
28. Easy Lube Axles
29. Triple Entry Ramps
30. Entry Steps
31. Frameless Jalousie Tinted Windows

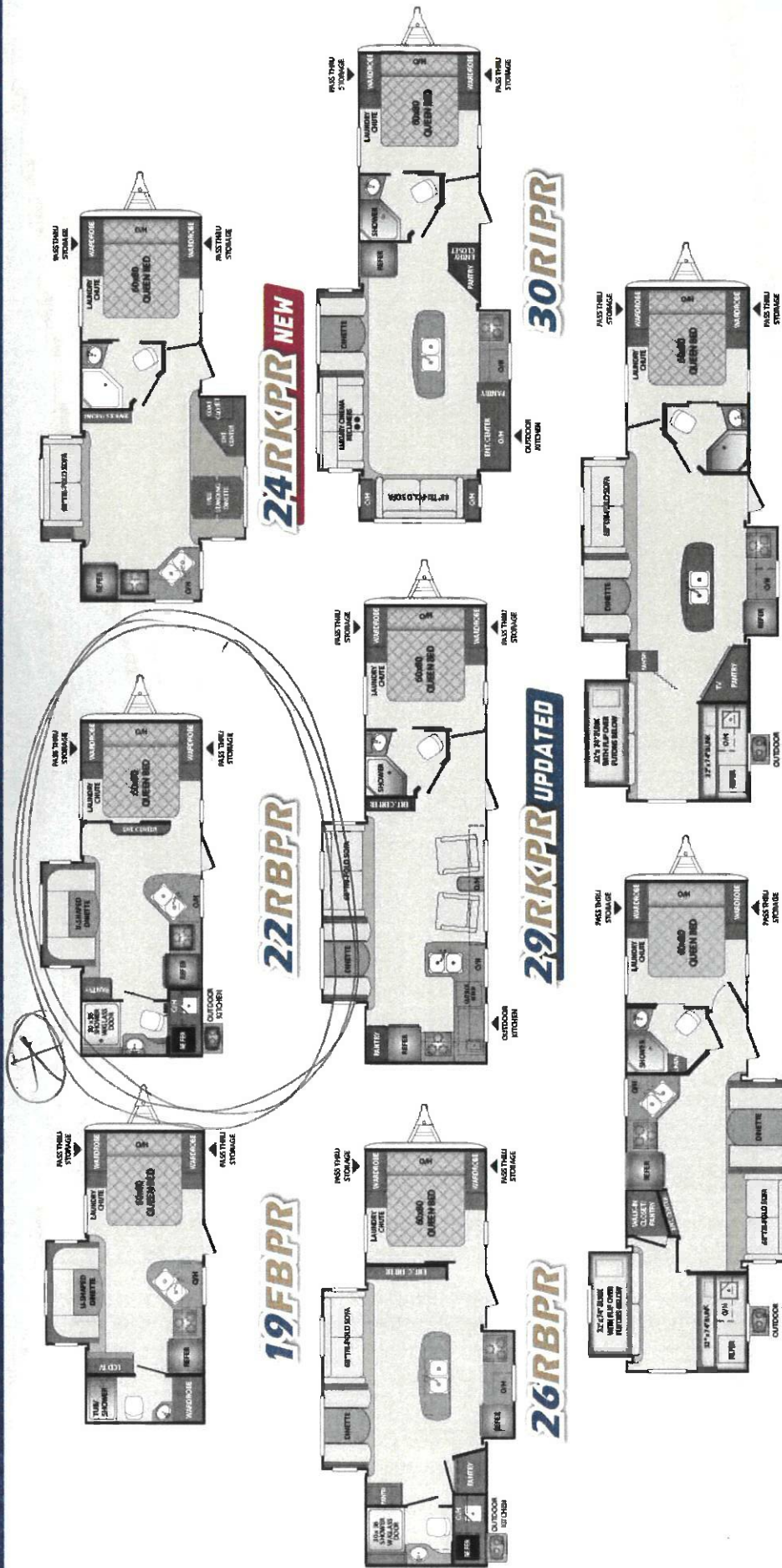
BENEFITS OF A MOLDED PAINTED FIBERGLASS FRONT CAP

- ✓ 1/4" thick molded painted fiberglass won't cold crack and is strong enough to hold up to rock damage unlike competitors ABS panels.
- ✓ A true "cap" is molded over the edges of the sidewall/roof/floor and "caps" the front end of the trailer preventing any water leaks. Many competitors "caps" are flat ABS panels that have 90 degree seams where it meets the sidewall. They also have a seam between the panel and rock guard which invites water intrusion.



COMPETITION

PREMIER FLOOR PLANS

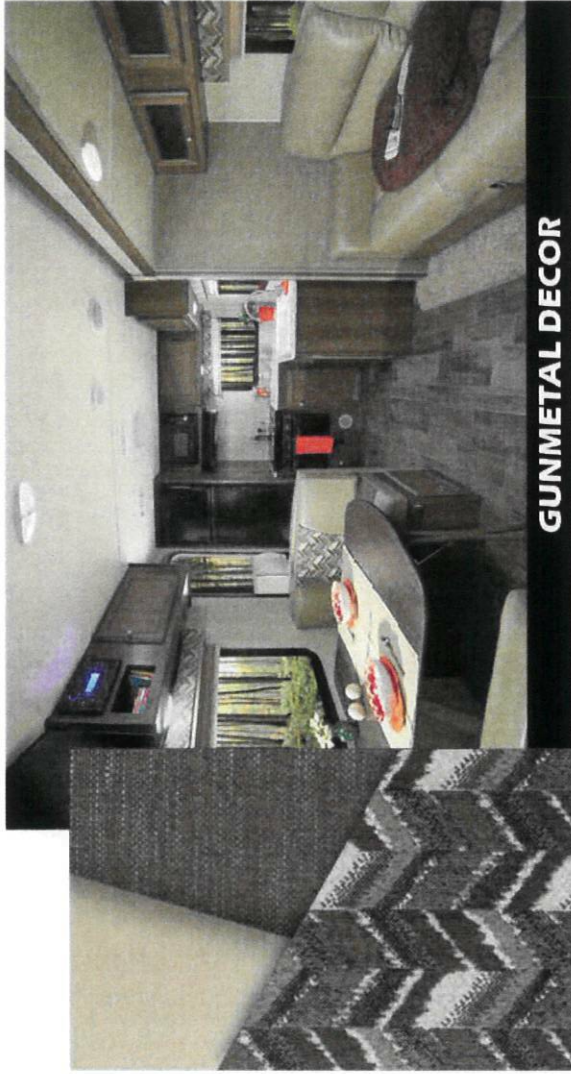


PREMIER WEIGHTS AND MEASUREMENTS

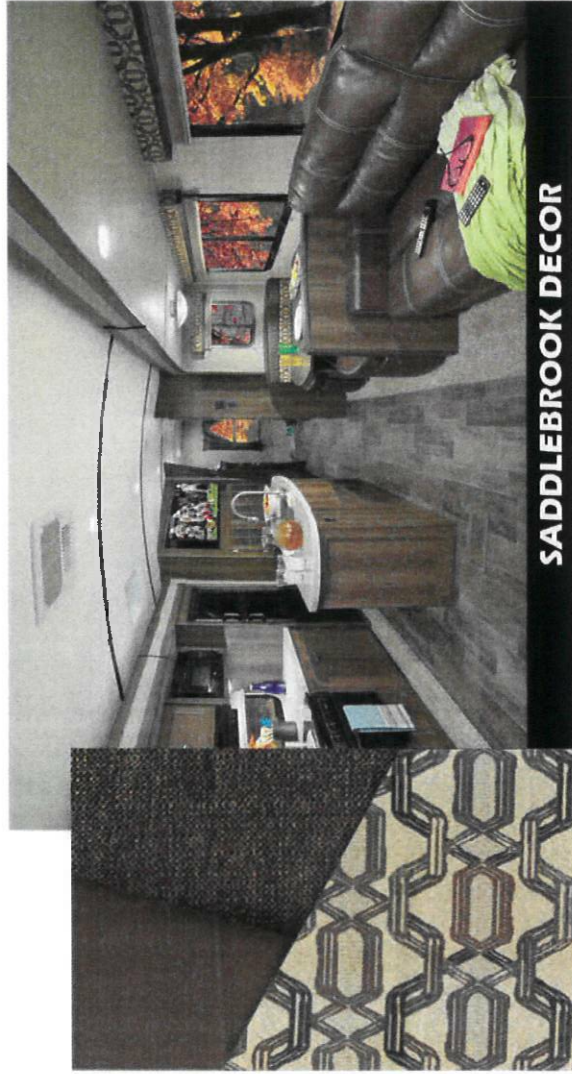
MODEL	SHIPPING WEIGHT	CARRYING CAPACITY	HITCH	LENGTH*	HEIGHT	FRESH WATER	WASTE WATER	GRAY WATER	LPG	AWNING
19FBPR	4246	2230	485	23' 9"	11'	43	30	30	40	14'
22RBPR	4885	1615	595	26' 5"	11'	43	30	30	40	15'
24RKPR	5455	2085	655	29'	11'	43	30	60	40	15'
26RBPR	5995	1535	765	31' 6"	11'	43	30	60	40	20'
29RKPR	6145	1545	690	33' 11"	11' 1"	43	30	60	40	15'
30R1PR	6667	1525	740	35' 5"	11' 2"	43	30	60	40	20'
31BKPR	6750	2165	850	35' 11"	11' 4"	43	30	30	40	19'
34BHPR	7075	1670	790	37' 7"	11' 4"	43	30	60	40	19'

*Length is defined as the distance from the centerline of the hitch pin/coupler to rear bumper of the trailer. SEE DISCLAIMER ON BACK PAGE.

DECOR OPTIONS



GUNMETAL DECOR



SADDLEBROOK DECOR



Stay in Touch



LEARN MORE



Bullet Crossfire, Bullet Ultra-Lite and Premier is always just a touch away. You'll find 360 virtual tours, location of your nearest dealer, photos, videos and all of the latest information on our easy to navigate website. Everything you need can be accessed anytime, day or night, from home or on the road.

You can also find us on the Keystone RV Facebook page.

www.keystonerv.com/Bullet
BULLET
CROSSFIRE

www.keystonerv.com/Bullet
BULLET
Ultra Lite

www.keystonerv.com/Premier
PREMIER
— ULTRA LITE BY BULLET —

	CROSSFIRE	BULLET	PREMIER
CONSTRUCTION STANDARDS			
Aggressive Front Profile for Increased Towability	●	●	●
Aluminum Framed Front, Rear, and Side Walls	●	●	●
Aluminum Framed Slideouts	●	●	●
Laminated Fiberglass Exterior Side Walls	●	●	●
2" Thick Laminated Aluminum Floor	●	●	●
Darco Moisture Barrier	●	●	●
One Piece TPO Roof	●	●	●
E-Z Lube Dexter Axles	●	●	●
Electric Brake System (4 wheels)	●	●	●
R-11 Insulation in Roof	●	●	●
R-7 Insulation in Sidewalls	●	●	●
R-11 Insulation in Roof	●	●	●
In Frame Fresh, Grey, and Black Water Tanks	●	●	●
7.5" - 10.5" steel Z-Beam with Full-Length Welded Outrigger	●	●	●
1/4" ABS Enclosed Underbelly	●	●	●
EXTERIOR CAMPING PACKAGE			
6 Gallon Gas/Electric DSI Water Heater with Quick Recovery	●	●	●
Radius Entry Door with Gas Strut	●	●	●
Outside Speakers	●	●	●
4 Stabilizer Jacks	●	●	●
TV Antenna and Cable/Satellite Hook-Up	●	●	●
Radial Tires	●	●	●
Electric Awning	●	●	●
LED Awning Light	●	●	●
Wide Stance E-Z Lube Dexter Axles	●	●	●
Outside Shower (Hot and Cold Water)	●	●	●
Black Tank Flush	●	●	●
EXTERIOR FEATURES			
Dual Propane Tanks with Cover	●	●	●
In Frame Dual Battery Rack	●	●	●
Spac Tire	●	●	●
Extended 4" Down Spouts	●	●	●
Front Diamond Plate	●	●	●
Oversized Grab Handle (main door)	●	●	●
9" Triple Entry Steps	●	●	●
Magnetic Storage Door Catches	●	●	●
Aluminum Wheels	●	●	●
Oversized Exterior Pass Thru Storage with Lighting	●	●	●
LP Quick Connect	●	●	●
Outdoor Kitchen with Galvanized Countertop (228BPR, 298KPR, 308IPR, 318HPR, 348HPR)	●	●	●
INTERIOR CAMPING PACKAGE			
13.5 BTU A/C	●	●	●
Night Shades	●	●	●
Bluetooth Stereo with Aux and I-Pod Hookup	●	●	●
Microwave	●	●	●
Hardwood Cabinet Doors	●	●	●
Foot Flush Toilet	●	●	●
Tub Surround with Shelves	●	●	●
Full Extension Drawer Glides	●	●	●
9" Deep Oversized Single Basin Sink with High Rise Faucet (N/A 220, 311)	●	●	●
6 cu./ft. Double Door Refrigerator	●	●	●
Stainless Steel Sink (Bullet 220, 311, 330 Only)	●	●	●
32" LED TV (19FBPR, 228BPR, 298KPR, 308IPR, 318HPR)	●	●	●
Flush Mount 3 Burner Range with Glass Cover	●	●	●
42" LED TV (268BPR, 308IPR, 348H)	●	●	●
8 cu./ft. Double Door Refrigerator	●	●	●
2 Burner Cooktop	●	●	●
INTERIOR FEATURES			
Residential Style Furniture	●	●	●
Night Shades in Living Area	●	●	●
Water Heater-By-Pass for Winterization	●	●	●
Interior LED Lights	●	●	●
17" Oven	●	●	●
Back Splash (residential)	●	●	●
Stainless Dinettes	●	●	●
Retractable Kitchen Faucet	●	●	●
BATHROOM			
Towel Hooks	●	●	●
Power Vent Fan	●	●	●
Solid Wood Medicine Cabinet	●	●	●
Linen Storage	●	●	●
Deluxe Curved Shower Curtain	●	●	●
Oversized Showers w/GlassDoor (N/A on 19FBPR, 318HPR)	●	●	●
INTERIOR CAMPING PACKAGE			
13.5 BTU A/C	●	●	●
Night Shades	●	●	●
Bluetooth Stereo with Aux and I-Pod Hookup	●	●	●
Microwave	●	●	●
Hardwood Cabinet Doors	●	●	●
Foot Flush Toilet	●	●	●
Tub Surround with Shelves	●	●	●
Full Extension Drawer Glides	●	●	●
9" Deep Oversized Single Basin Sink with High Rise Faucet (N/A 220, 311)	●	●	●
6 cu./ft. Double Door Refrigerator	●	●	●
Stainless Steel Sink (Bullet 220, 311, 330 Only)	●	●	●
32" LED TV (19FBPR, 228BPR, 298KPR, 308IPR, 318HPR)	●	●	●
Flush Mount 3 Burner Range with Glass Cover	●	●	●
42" LED TV (268BPR, 308IPR, 348H)	●	●	●
8 cu./ft. Double Door Refrigerator	●	●	●
2 Burner Cooktop	●	●	●
INTERIOR FEATURES			
Residential Style Furniture	●	●	●
Night Shades in Living Area	●	●	●
Water Heater-By-Pass for Winterization	●	●	●
Interior LED Lights	●	●	●
17" Oven	●	●	●
Back Splash (residential)	●	●	●
Stainless Dinettes	●	●	●
Retractable Kitchen Faucet	●	●	●
BATHROOM			
Towel Hooks	●	●	●
Power Vent Fan	●	●	●
Solid Wood Medicine Cabinet	●	●	●
Linen Storage	●	●	●
Deluxe Curved Shower Curtain	●	●	●
Oversized Showers w/GlassDoor (N/A on 19FBPR, 318HPR)	●	●	●
MASTER BEDROOM			
Upgraded Foam Mattress	●	●	●
Dual 110V Outlets	●	●	●
Mirrored Wardrobes	●	●	●
Under Bed Storage	●	●	●
Full Blackout Window Curtains	●	●	●
Individual LED Reading Lights	●	●	●
Hardwood Entry Doors	●	●	●
Laundry Chute	●	●	●
SAFETY EQUIPMENT			
Carbon Monoxide Detector	●	●	●
Smoke Alarm	●	●	●
Fire Extinguisher	●	●	●
Electric Brakes	●	●	●
Safety Chains	●	●	●
Frameless Tinted Safety Glass Windows, Egress Windows (Fire Escape)	●	●	●
GFI Receptacles	●	●	●
OPTIONS			
Bumper Mounted Aussie Grill	●	●	●
15K A/C	●	●	●
50 AMP Service w/second A/C (N/A Premier 19FBPR, 228BPR) (Bullet 308, 311, 330 Only)	●	●	●
Tri-Fold Sofa (N/A 220, 243)	●	●	●
THERMAL PACKAGE			
Ducted Heat and Enclosed Heated Underbelly	●	●	●
2" Duct off of Furnace to Underbelly	●	●	●
30K BTU Furnace and Residential Heat Ducts	●	●	●
PREMIER PACKAGE			
Aerodynamic Fiberglass Front Cap	●	●	●
6' 11" Vaulted Ceiling	●	●	●
Frameless Tinted Windows	●	●	●
Power Tongue Jack	●	●	●
Tri-Fold Sofa	●	●	●
Max Depth Slides	●	●	●
LED Flush Mounted Puck Lighting	●	●	●
Upgraded Exterior Graphics Package	●	●	●
Black Tank Flush	●	●	●

DSI
 Awarded RVDA DEALER
 SATISFACTION INDEX
 AWARD WINNER
 7 years in a row

LEARN MORE



BULLET
 CROSSFIRE

BULLET
 Ultra Lite

BULLET
 Ultra Lite BY BULLET

WWW.KEYSTONERV.COM/BULLET

CONNECT WITH KEYSTONE RV AND STAY UP TO
 DATE WITH PRODUCT NEWS AND INFORMATION



Go RVing
 Life's A Trip

2642 Hackberry Drive
 PO Box 2000
 Goshen, IN 46527-2000
 (574) 535-2100



Keystone RV
 Company
www.keystonerv.com

YOUR LOCAL DEALER

BUY LOCAL PURCHASING YOUR RV LOCALLY

It's up to you where you purchase your new Bullet, but may we suggest your local dealer? Not only does it help your local economy and provide jobs, but it will also give you an opportunity to develop a service relationship with someone that will come to know you and your coach. Congratulations on finding the best built, best equipped, best value in the industry, and happy travels!

DECEMBER 2016

Product information is as accurate as possible at the date of publication of this brochure. Features, floor plans, and specifications are subject to change without notice. Please also consult Keystone's web site at keystonerv.com for more current product information and specifications. Tow Vehicle Disclaimer: CAUTION: Owners of Keystone recreational vehicles are solely responsible for the selection and proper use of tow vehicles. All customers should consult with a motor vehicle manufacturer or their dealer concerning the purchase and use of suitable tow vehicles for Keystone products. Keystone disclaims any liability or damages suffered as a result of the selection, operation, use or misuse of a tow vehicle. KEYSTONE'S LIMITED WARRANTY DOES NOT COVER DAMAGE TO THE RECREATIONAL VEHICLE OR THE TOW VEHICLE AS A RESULT OF THE SELECTION, OPERATION, USE OR MISUSE OF THE TOW VEHICLE. *Length is defined as the distance from the centerline to the hitch pin/coupler to rear bumper of the trailer.