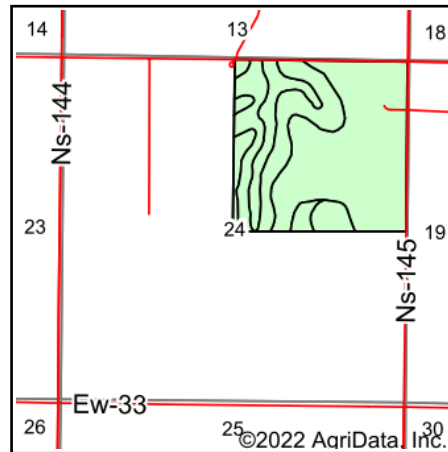
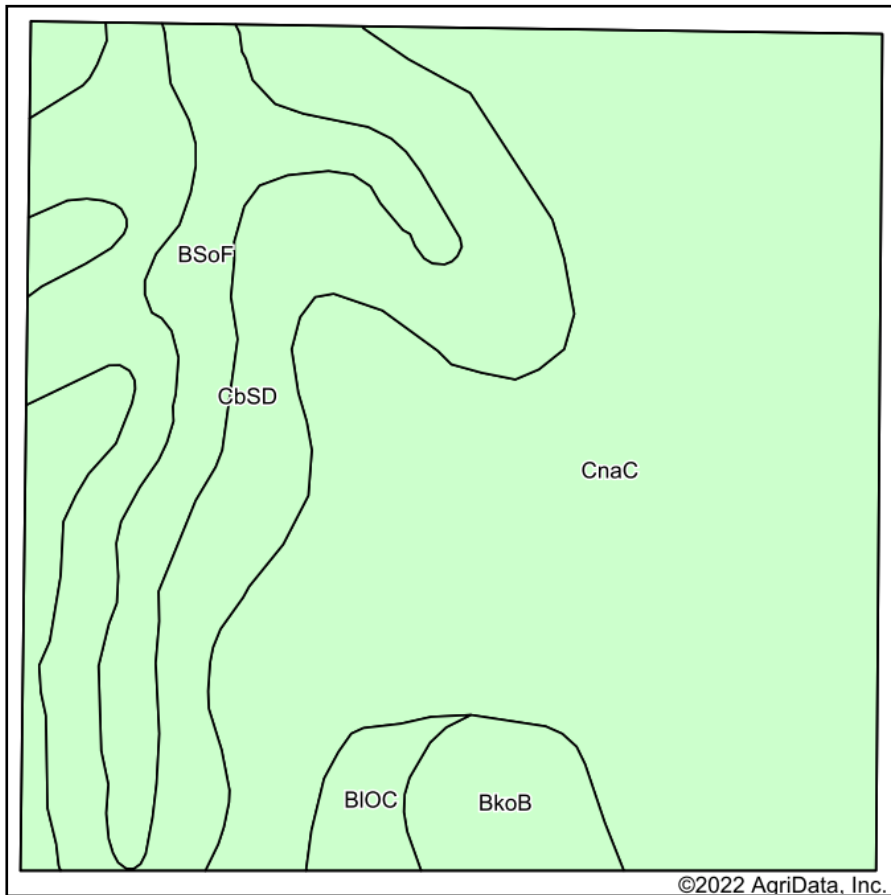


# Soils Map



State: **Oklahoma**  
 County: **Beaver**  
 Location: **24-1N-24E**  
 Township: **South Beaver**  
 Acres: **158.38**  
 Date: **1/5/2022**



Maps Provided By:



Soils data provided by USDA and NRCS.

Area Symbol: OK007, Soil Area Version: 18

Code	Soil Description	Acres	Percent of field	Non-Irr Class *c	Irr Class *c	Range Production (lbs/acre/yr)	Alfalfa hay Irrigated Tons	Corn Irrigated Bu	Cotton lint Lbs	Cotton lint Irrigated Lbs	Grain sorghum Bu	Grain sorghum Irrigated Bu	Grain sorghum Lbs	Grain sorghum Irrigated Lbs	Introduced bluestem AUM
CnaC	Canina silt loam, 3 to 5 percent slopes	96.19	60.7%	IIIe	IIIe	1729	5	137	319	637	27	73	27	73	
CbSD	Catesby-Slapout loams, 5 to 8 percent slopes	39.16	24.7%	IVe	IVe	1496									3
BSoF	Bippus frequently flooded-Slapout complex, 0 to 20 percent slopes	14.16	8.9%	Vw	Vw	2369	4	97	342	741	17	68	17	68	1
BkoB	Balko silt loam, 1 to 3 percent slopes	5.85	3.7%	IIIe	IIe	1296		174	348	957	28	122	28	122	
BIOC	Balko-Oslo silt loams, 2 to 5 percent slopes	3.02	1.9%	IIIe	IIIe	1254		164	336	880	25	113	25	113	
<b>Weighted Average</b>				<b>3.43</b>	<b>3.39</b>	<b>1703.6</b>	<b>3.4</b>	<b>101.4</b>	<b>243.6</b>	<b>505.3</b>	<b>19.4</b>	<b>57.1</b>	<b>19.4</b>	<b>57.1</b>	<b>0.8</b>

\*n: The aggregation method is "Weighted Average using all components"

\*c: Using Capabilities Class Dominant Condition Aggregation Method

Soils data provided by USDA and NRCS.