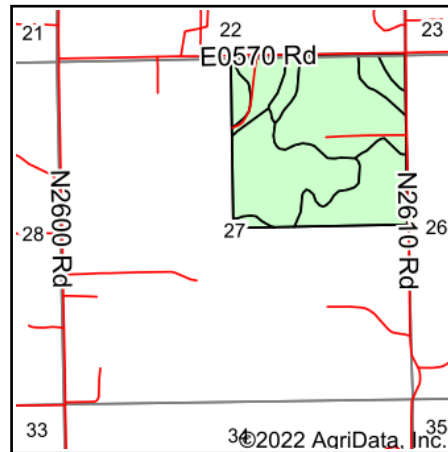
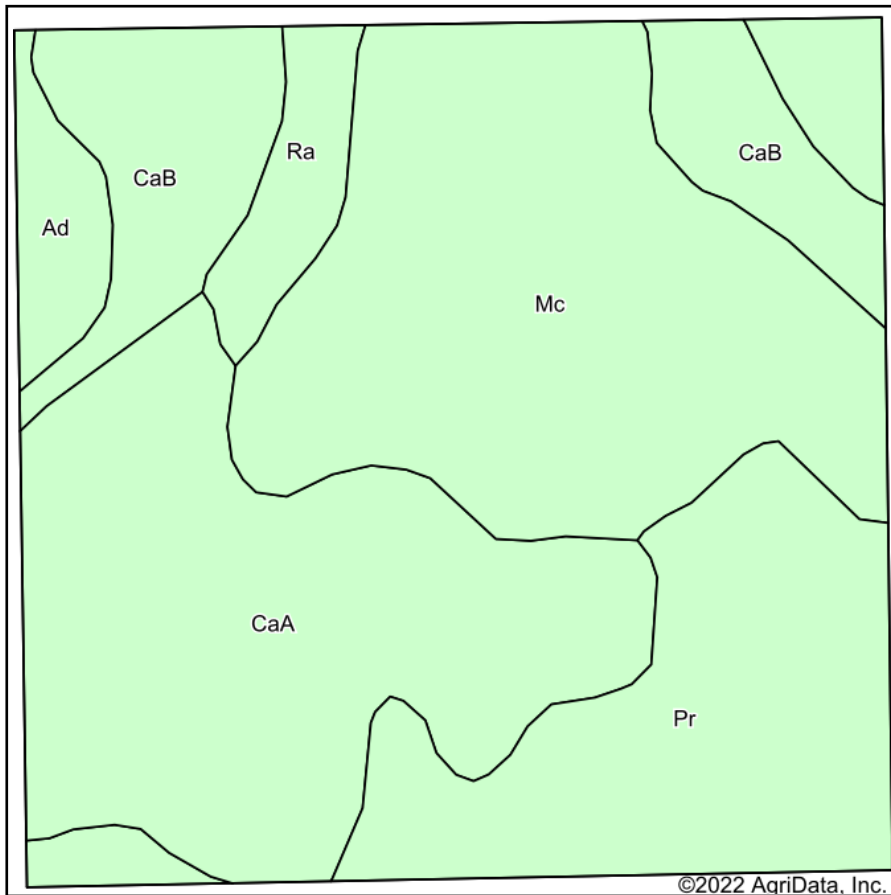


# Soils Map



State: **Oklahoma**  
 County: **Major**  
 Location: **27-20N-11W**  
 Township: **Fairview**  
 Acres: **159.36**  
 Date: **7/26/2022**



Soils data provided by USDA and NRCS.

©2022 AgriData, Inc.

© AgriData, Inc. 2021

www.AgriDataInc.com

Area Symbol: OK093, Soil Area Version: 16

Code	Soil Description	Acres	Percent of field	Non-Irr Class *c	Irr Class *c	Range Production (lbs/acre/yr)	Alfalfa hay Tons	Caucasian bluestem AUM	Cotton lint Lbs	Grain sorghum Bu	Improved bermudagrass AUM	Introduced bluestem AUM	Peanuts Lbs	Soybeans Bu	W Bu
Mc	McLain silty clay loam, 0 to 1 percent slopes, rarely flooded	52.87	33.2%		I	6100	5			55	6	4			
CaA	Canadian fine sandy loam, 0 to 1 percent slopes, rarely flooded	45.91	28.8%		I	3150									
Pr	Port silt loam, 0 to 1 percent slopes, occasionally flooded	29.68	18.6%	IIw		6112	5		13	49	9		48		
CaB	Canadian fine sandy loam, 1 to 3 percent slopes, rarely flooded	20.66	13.0%		I	3318									
Ra	Reinach very fine sandy loam, 0 to 1 percent slopes, rarely flooded	5.44	3.4%	Is		6100	5		25	59	9	6	51	1	
Ad	Yahola and Port soils, 0 to 1 percent slopes, frequently flooded	4.80	3.0%	Vw		6245			3		5	2			
<b>Weighted Average</b>				<b>1.31</b>	<b>*-</b>	<b>4896.1</b>	<b>2.8</b>	<b>0.1</b>	<b>3.3</b>	<b>29.4</b>	<b>4.1</b>	<b>1.6</b>	<b>10.7</b>	<b>*-</b>	

\*n: The aggregation method is "Weighted Average using all components"

\*c: Using Capabilities Class Dominant Condition Aggregation Method

\*- Irr Class weighted average cannot be calculated on the current soils data due to missing data.

Soils data provided by USDA and NRCS.