

STR # 62749 / Created November 18, 2021



Monthly STAR Report : Sleep Inn & Suites Hennessey North

For the Month of: October 2021

Currency: US Dollar / Competitive Set Data Excludes Subject Property

Table Of Contents	1
Monthly Performance at a Glance	2
STAR Summary	3
Competitive Set Report	4
Response Report	5
Day of Week & Weekday/Weekend	6
Daily Data for the Month	7
Help	8

Corporate North American Headquarters
T: +1 (615) 824 8664
support@str.com www.str.com

International Headquarters
T: +44 (0) 207 922 1930
hotelinfo@str.com www.str.com

2021 © CoStar Group. This STR Report is a publication of STR, LLC and STR Global, Ltd., CoStar Group companies, and is intended solely for use by paid subscribers. The information in the STR Report is provided on an "as is" and "as available" basis and should not be construed as investment, tax, accounting or legal advice. Reproduction or distribution of this STR Report, in whole or part, without written permission is prohibited and subject to legal action. If you have received this report and are NOT a subscriber to this STR Report, please contact us immediately. Source: 2021 STR, LLC / STR Global, Ltd. trading as "STR".

Tab 2 - Monthly Performance at a Glance - My Property vs. Competitive Set

Sleep Inn & Suites Hennessey North 522 N Main St Hennessey, OK 73742-1019 Phone: (405) 853-2126

STR # 62749 ChainID: OK223 MgtCo: None Owner: None

For the Month of: October 2021 Date Created: November 18, 2021 Monthly Competitive Set Data Excludes Subject Property

October 2021

	Occupancy (%)			ADR			RevPAR		
	My Prop	Comp Set	Index (MPI)	My Prop	Comp Set	Index (ARI)	My Prop	Comp Set	Index (RGI)
Current Month	65.5	57.7	113.6	71.00	67.65	105.0	46.50	39.00	119.2
Year To Date	55.2	50.5	109.2	72.22	76.32	94.6	39.87	38.57	103.4
Running 3 Month	57.6	48.8	118.0	70.93	68.98	102.8	40.83	33.64	121.4
Running 12 Month	51.8	50.2	103.1	71.47	74.53	95.9	37.03	37.44	98.9

October 2021 vs. 2020 Percent Change (%)

	Occupancy			ADR			RevPAR		
	My Prop	Comp Set	Index (MPI)	My Prop	Comp Set	Index (ARI)	My Prop	Comp Set	Index (RGI)
Current Month	109.3	42.2	47.2	-3.6	-1.5	-2.1	101.7	40.0	44.1
Year To Date	30.2	7.0	21.7	-2.0	11.8	-12.4	27.5	19.6	6.7
Running 3 Month	69.5	8.9	55.7	-4.6	1.7	-6.2	61.7	10.7	46.0
Running 12 Month	21.2	5.7	14.7	-4.6	7.1	-10.9	15.7	13.2	2.1

2021 © CoStar Group. This STR Report is a publication of STR, LLC and STR Global, Ltd., CoStar Group companies, and is intended solely for use by paid subscribers. The information in the STR Report is provided on an "as is" and "as available" basis and should not be construed as investment, tax, accounting or legal advice. Reproduction or distribution of this STR Report, in whole or part, without written permission is prohibited and subject to legal action. If you have received this report and are NOT a subscriber to this STR Report, please contact us immediately. Source: 2021 STR, LLC / STR Global, Ltd. trading as "STR".

Tab 3 - STAR Summary - My Property vs. Comp Set and Industry Segments

Sleep Inn & Suites Hennessey North 522 N Main St Hennessey, OK 73742-1019 Phone: (405) 853-2126

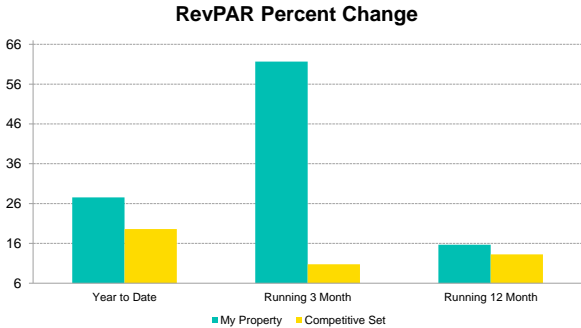
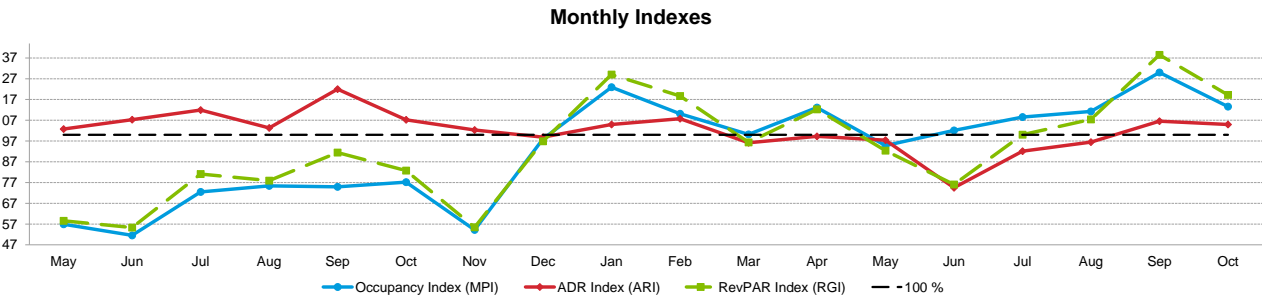
STR # 62749 ChainID: OK223 MgtCo: None Owner: None

For the Month of: October 2021 Date Created: November 18, 2021 Monthly Competitive Set Data Excludes Subject Property

	Occupancy (%)								Supply			
	Current Month	% Chg	Year to Date	% Chg	Running 3 Month	% Chg	Running 12 Month	% Chg	Month % Chg	YTD % Chg	Run 3 Mon % Chg	Run 12 Mon % Chg
Sleep Inn & Suites Hennessey North	65.5	109.3	55.2	30.2	57.6	69.5	51.8	21.2	0.0	-0.3	0.0	-0.3
Market: Oklahoma Area	54.3	18.4	53.1	32.5	53.8	23.1	50.1	24.3	3.0	1.5	3.1	1.2
Market Class: Midscale Class	57.9	15.8	56.7	33.0	56.7	18.4	53.8	26.1	18.3	5.2	18.3	3.7
Submarket: Oklahoma West Area	51.4	16.0	49.8	31.4	51.6	22.4	47.1	22.5	0.9	1.1	0.9	1.0
Submarket Scale: Midscale Chains	61.0	7.9	58.4	25.7	59.7	13.3	55.6	18.5	-2.2	-1.2	-2.9	-0.9
Competitive Set: Competitors	57.7	42.2	50.5	7.0	48.8	8.9	50.2	5.7	0.0	0.0	0.0	0.0
	Average Daily Rate								Demand			
	Current Month	% Chg	Year to Date	% Chg	Running 3 Month	% Chg	Running 12 Month	% Chg	Month % Chg	YTD % Chg	Run 3 Mon % Chg	Run 12 Mon % Chg
Sleep Inn & Suites Hennessey North	71.00	-3.6	72.22	-2.0	70.93	-4.6	71.47	-4.6	109.3	29.8	69.5	20.9
Market: Oklahoma Area	82.81	13.5	78.13	10.6	81.96	14.0	77.02	7.8	21.9	34.6	27.0	25.8
Market Class: Midscale Class	87.09	15.5	82.96	12.3	87.12	16.7	81.69	9.4	37.1	39.9	40.1	30.8
Submarket: Oklahoma West Area	79.67	10.3	76.58	11.4	78.55	11.6	75.78	9.2	17.0	32.9	23.5	23.7
Submarket Scale: Midscale Chains	94.01	14.3	90.55	11.6	93.80	15.7	89.04	8.7	5.5	24.2	9.9	17.4
Competitive Set: Competitors	67.65	-1.5	76.32	11.8	68.98	1.7	74.53	7.1	42.2	7.0	8.9	5.7
	RevPAR								Revenue			
	Current Month	% Chg	Year to Date	% Chg	Running 3 Month	% Chg	Running 12 Month	% Chg	Month % Chg	YTD % Chg	Run 3 Mon % Chg	Run 12 Mon % Chg
Sleep Inn & Suites Hennessey North	46.50	101.7	39.87	27.5	40.83	61.7	37.03	15.7	101.7	27.1	61.7	15.3
Market: Oklahoma Area	45.00	34.3	41.52	46.5	44.06	40.4	38.60	34.0	38.3	48.8	44.8	35.6
Market Class: Midscale Class	50.40	33.8	47.04	49.4	49.39	38.1	43.91	38.0	58.3	57.2	63.4	43.1
Submarket: Oklahoma West Area	40.94	27.9	38.14	46.4	40.55	36.6	35.71	33.7	29.1	48.0	37.8	35.1
Submarket Scale: Midscale Chains	57.33	23.3	52.86	40.3	56.00	31.0	49.48	28.8	20.6	38.7	27.1	27.6
Competitive Set: Competitors	39.00	40.0	38.57	19.6	33.64	10.7	37.44	13.2	40.0	19.6	10.7	13.2
	Census/Sample - Properties & Rooms											
	Census		Sample		Sample %							
Market: Oklahoma Area	Properties		Rooms	Properties		Rooms	Rooms					
	500		31483	231		16736	53.2					
	56		5942	36		2439	41.0					
	178		10482	84		6188	59.0					
	50		3733	49		3653	97.9					
	4		303	3		205	67.7					

Tab 4 - Competitive Set Report

Sleep Inn & Suites Hennessey North 522 N Main St Hennessey, OK 73742-1019 Phone: (405) 853-2126
STR # 62749 ChainID: OK223 MgtCo: None Owner: None
For the Month of: October 2021 Date Created: November 18, 2021 Monthly Competitive Set Data Excludes Subject Property



Occupancy (%)	2020								2021									
	May	Jun	Jul	Aug	Sep	Oct	Nov	Dec	Jan	Feb	Mar	Apr	May	Jun	Jul	Aug	Sep	Oct
My Property	26.3	25.9	37.2	41.0	29.4	31.3	32.3	37.5	38.3	47.8	49.6	56.3	60.9	76.9	49.6	46.8	60.5	65.5
Competitive Set	46.2	50.2	51.3	54.4	39.2	40.5	59.5	38.3	31.2	43.4	49.5	49.7	64.2	75.3	45.7	42.1	46.5	57.7
Index (MPI)	56.9	51.6	72.5	75.4	75.0	77.2	54.2	98.0	122.9	110.1	100.2	113.1	94.8	102.1	108.6	111.3	130.0	113.6
Rank	4 of 4	4 of 4	4 of 4	4 of 4	4 of 5	4 of 5	4 of 4	2 of 4	2 of 4	2 of 4	2 of 4	2 of 4	2 of 4	2 of 4	2 of 4	2 of 4	2 of 4	1 of 4

% Chg																									
My Property		-64.1	-66.5	-52.7	-32.8	-52.9	-60.2	-47.0	31.2	-31.0	-37.1	-26.1	59.2	131.4	197.4	33.5	14.2	105.7	109.3						
Competitive Set		-24.6	-9.7	-19.1	-17.7	-20.4	-30.7	12.4	-14.8	-33.8	-17.9	-4.0	27.0	38.9	50.2	-10.9	-22.6	18.6	42.2						
Index (MPI)		-52.4	-62.9	-41.5	-18.3	-40.9	-42.6	-52.9	53.9	4.3	-23.3	-23.0	25.4	66.5	98.0	49.8	47.6	73.4	47.2						
Rank		4 of 4	4 of 4	4 of 4	3 of 4	4 of 4	4 of 4	4 of 4	1 of 4	3 of 4	3 of 4	3 of 4	2 of 4	1 of 4	1 of 4	1 of 4	1 of 4	1 of 4	1 of 4						

Year To Date			Running 3 Month			Running 12 Month		
2019	2020	2021	2019	2020	2021	2019	2020	2021
75.0	42.4	55.2	67.4	34.0	57.6	77.3	42.7	51.8
58.6	47.2	50.5	58.1	44.8	48.8	58.0	47.5	50.2
128.0	89.7	109.2	116.1	75.8	118.0	133.3	90.0	103.1
1 of 4	3 of 4	2 of 4	2 of 4	4 of 5	2 of 4	1 of 4	3 of 4	2 of 4

ADR	2020								2021									
	May	Jun	Jul	Aug	Sep	Oct	Nov	Dec	Jan	Feb	Mar	Apr	May	Jun	Jul	Aug	Sep	Oct
My Property	66.92	75.20	78.36	71.10	79.90	73.66	66.54	64.84	66.55	67.77	67.29	71.48	78.74	76.98	75.48	70.66	71.07	71.00
Competitive Set	65.09	70.10	70.01	68.81	65.49	68.71	65.03	65.56	63.41	62.88	69.98	72.03	80.84	103.32	81.92	73.22	66.71	67.65
Index (ARI)	102.8	107.3	111.9	103.3	122.0	107.2	102.3	98.9	105.0	107.8	96.2	99.2	97.4	74.5	92.1	96.5	106.5	105.0
Rank	2 of 4	1 of 4	1 of 4	2 of 4	1 of 5	2 of 5	2 of 4	2 of 4	2 of 4	1 of 4	3 of 4	3 of 4	3 of 4	4 of 4	3 of 4	3 of 4	2 of 4	2 of 4

Year To Date			Running 3 Month			Running 12 Month		
2019	2020	2021	2019	2020	2021	2019	2020	2021
88.62	73.72	72.22	85.86	74.38	70.93	87.64	74.92	71.47
78.47	68.28	76.32	77.14	67.83	68.98	78.40	69.59	74.53
112.9	108.0	94.6	111.3	109.7	102.8	111.8	107.6	95.9
1 of 4	2 of 4	3 of 4	2 of 4	2 of 5	2 of 4	1 of 4	2 of 4	3 of 4

% Chg																									
My Property		-29.4	-19.8	-6.0	-18.7	-9.1	-11.3	-18.5	-17.5	-11.8	-7.9	-7.6	1.9	17.7	2.4	-3.7	-0.6	-11.0	-3.6						
Competitive Set		-23.3	-9.3	-11.1	-13.2	-15.6	-7.6	-13.6	-14.5	-13.4	-12.2	2.7	22.3	24.2	47.4	17.0	6.4	1.9	-1.5						
Index (ARI)		-7.9	-11.5	5.7	-6.4	7.7	-4.0	-5.6	-3.5	1.8	4.9	-10.0	-16.7	-5.3	-30.6	-17.7	-6.6	-12.7	-2.1						
Rank		4 of 4	4 of 4	2 of 4	3 of 4	3 of 4	3 of 4	4 of 4	4 of 4	2 of 4	2 of 4	3 of 4	4 of 4	2 of 4	4 of 4	4 of 4	4 of 4	3 of 4	2 of 4						

Year To Date			Running 3 Month			Running 12 Month		
2019	2020	2021	2019	2020	2021	2019	2020	2021
5.5	-16.8	-2.0	0.3	-13.4	-4.6	4.1	-14.5	-4.6
-2.5	-13.0	11.8	-6.0	-12.1	1.7	-2.5	-11.2	7.1
8.2	-4.4	-12.4	6.7	-1.5	-6.2	6.8	-3.7	-10.9
1 of 4	4 of 4	4 of 4	1 of 4	3 of 4	2 of 4	1 of 4	4 of 4	4 of 4

RevPAR	2020								2021									
	May	Jun	Jul	Aug	Sep	Oct	Nov	Dec	Jan	Feb	Mar	Apr	May	Jun	Jul	Aug	Sep	Oct
My Property	17.61	19.45	29.12	29.18	23.49	23.05	21.47	24.30	25.51	32.38	33.39	40.22	47.95	59.22	37.45	33.10	42.97	46.50
Competitive Set	30.09	35.16	35.90	37.44	25.69	27.86	38.70	25.08	19.77	27.29	34.65	35.83	51.92	77.84	37.44	30.82	31.02	39.00
Index (RGI)	58.5	55.3	81.1	77.9	91.4	82.7	55.5	96.9	129.0	118.7	96.4	112.3	92.4	76.1	100.0	107.4	138.5	119.2
Rank	4 of 4	4 of 4	3 of 4	4 of 4	4 of 5	4 of 5	4 of 4	2 of 4	2 of 4	2 of 4	2 of 4	2 of 4	3 of 4	4 of 4	2 of 4	2 of 4	2 of 4	2 of 4

Year To Date			Running 3 Month			Running 12 Month		
2019	2020	2021	2019	2020	2021	2019	2020	2021
66.44	31.26	39.87	57.88	25.26	40.83	67.79	32.02	37.03
45.97	32.26	38.57	44.79	30.38	33.64	45.50	33.06	37.44
144.5	96.9	103.4	129.2	83.1	121.4	149.0	96.9	98.9
1 of 4	3 of 4	2 of 4	2 of 4	4 of 5	2 of 4	1 of 4	3 of 4	2 of 4

% Chg																									
My Property		-74.7	-73.1	-55.6	-45.3	-57.2	-64.7	-56.8	8.2	-39.1	-42.0	-31.7	62.3	172.2	204.4	28.6	13.4	82.9	101.7						
Competitive Set		-42.2	-18.1	-28.1	-28.6	-32.8	-35.9	-2.9	-27.1	-42.7	-28.0	-1.4	55.4	72.6	121.4	4.3	-17.7	20.8	40.0						
Index (RGI)		-56.2	-67.1	-38.2	-23.5	-36.3	-44.9	-55.5	48.4	6.2	-19.5	-30.7	4.5	57.8	37.5	23.3	37.8	51.5	44.1						
Rank		4 of 4	4 of 4	4 of 4	3 of 4	4 of 4	4 of 4	4 of 4	2 of 4	3 of 4	3 of 4	4 of 4	3 of 4	1 of 4	1 of 4	2 of 4	1 of 4	1 of 4	1 of 4						

Year To Date			Running 3 Month			Running 12 Month		
2019	2020	2021	2019	2020	2021	2019	2020	2021
-13.7	-53.0	27.5	-27.5	-56.4	61.7	-10.8	-52.8	15.7
-13.5	-29.8	19.6	-20.7	-32.2	10.7	-11.1	-27.3	13.2
-0.2	-33.0	6.7	-8.5	-35.7	46.0	0.4	-35.0	2.1
3 of 4	4 of 4	1 of 4	3 of 4	4 of 4	1 of 4	2 of 4	4 of 4	1 of 4

Tab 5 - Response Report

Sleep Inn & Suites Hennessey North 522 N Main St Hennessey, OK 73742-1019 Phone: (405) 853-2126
STR # 62749 ChainID: OK223 MgtCo: None Owner: None
For the Month of: October 2021 Date Created: November 18, 2021

This Year
Oct 11th - Columbus Day
Oct 31st - Halloween

October 2021 (This Year)

Sun	Mon	Tue	Wed	Thu	Fri	Sat
					1	2
3	4	5	6	7	8	9
10	11	12	13	14	15	16
17	18	19	20	21	22	23
24	25	26	27	28	29	30
31						

October 2020 (Last Year)

Sun	Mon	Tue	Wed	Thu	Fri	Sat
				1	2	3
4	5	6	7	8	9	10
11	12	13	14	15	16	17
18	19	20	21	22	23	24
25	26	27	28	29	30	31

Last Year
Oct 12th - Columbus Day
Oct 31st - Halloween

STR#	Name	City, State	Zip	Phone	Rooms	Open Date
62749	Sleep Inn & Suites Hennessey North	Hennessey, OK	73742-1019	(405) 853-2126	50	201308
3325	Grand Prairie Hotel	Enid, OK	73703	(580) 242-7110	98	198306
36764	Baymont Inn & Suites Enid	Enid, OK	73703	(580) 234-6800	58	199806
63401	Country Inn & Suites Enid	Enid, OK	73703	(580) 599-0372	77	201411
64464	La Quinta Inns & Suites Enid	Enid, OK	73703	(580) 233-7100	70	201511
					353	

	2020												2021												
Nov	Dec	Jan	Feb	Mar	Apr	May	Jun	Jul	Aug	Sep	Oct	Nov	Dec	Jan	Feb	Mar	Apr	May	Jun	Jul	Aug	Sep	Oct		
●	●	●	●	●	●	●	●	●	●	●	●	●	●	●	●	●	●	●	●	●	●	●	●		
												○	○												
●	●	●	●	●	●	●	●	●	●	●	●	●	●	●	●	●	●	●	●	●	●	●	●		
●	●	●	●	●	●	●	●	●	●	●	●	●	●	●	●	●	●	●	●	●	●	●	●		
●	●	●	●	●	●	●	●	●	●	●	●	●	●	●	●	●	●	●	●	●	●	●	●		

Data received:
○ = Monthly Only
● = Monthly & Daily

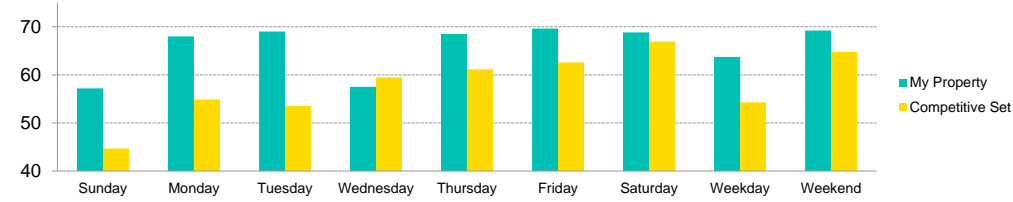
Tab 6 - Day of Week and Weekday/Weekend Report

Sleep Inn & Suites Hennessey North 522 N Main St Hennessey, OK 73742-1019 Phone: (405) 853-2126

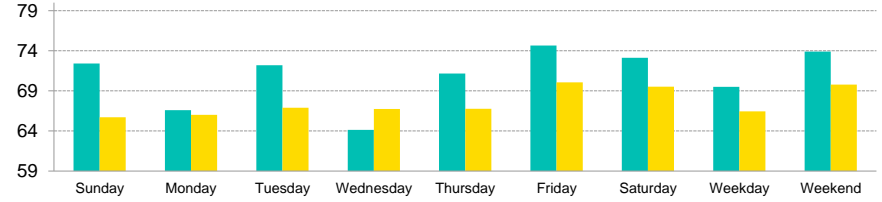
STR # 62749 ChainID: OK223 MgtCo: None Owner: None

For the Month of: October 2021 Date Created: November 18, 2021 Monthly Competitive Set Data Excludes Subject Property

Current Month Occupancy



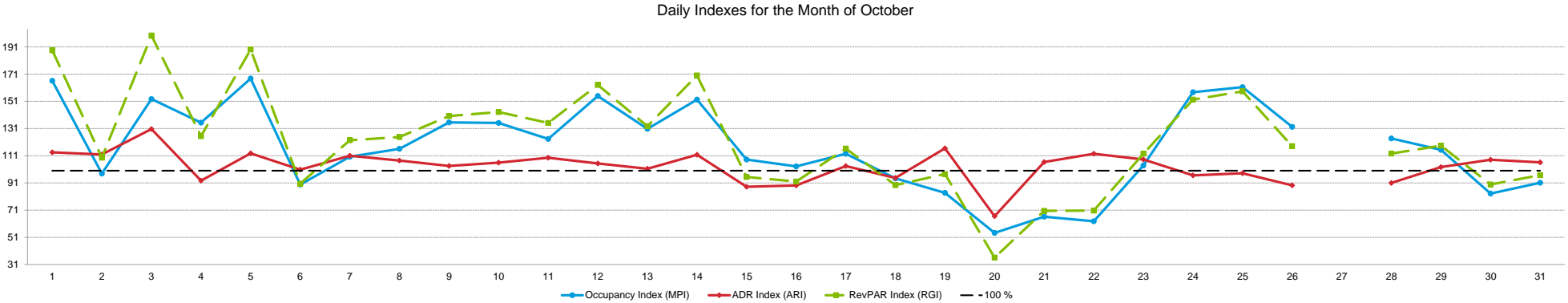
Current Month ADR



		Occupancy (%)						Average Daily Rate						RevPAR					
		My Property		Competitive Set		Index (MPI)		My Property		Competitive Set		Index (ARI)		My Property		Competitive Set		Index (RGI)	
Day of Week	Time Period		% Chg		% Chg		% Chg		% Chg		% Chg		% Chg		% Chg		% Chg		% Chg
Sunday	Current Month	57.2	257.5	44.7	67.7	128.0	113.2	72.42	-10.0	65.72	2.5	110.2	-12.3	41.42	221.6	29.37	71.9	141.1	87.1
	Year To Date	44.2	27.1	37.0	9.7	119.6	15.9	72.96	-1.3	74.86	14.6	97.5	-13.9	32.27	25.4	27.68	25.7	116.6	-0.2
	Running 3 Month	49.4	123.1	34.2	9.8	144.4	103.2	69.77	-8.1	68.14	5.3	102.4	-12.8	34.48	105.0	23.32	15.7	147.9	77.2
	Running 12 Month	41.7	20.0	37.3	11.7	111.9	7.4	72.07	-2.7	72.96	9.2	98.8	-10.9	30.08	16.8	27.20	22.0	110.6	-4.3
Monday	Current Month	68.0	156.6	54.9	61.0	123.9	59.4	66.60	-5.6	66.02	4.4	100.9	-9.6	45.29	142.3	36.23	68.1	125.0	44.1
	Year To Date	59.6	35.4	47.9	-3.7	124.4	40.5	68.48	-7.2	74.07	8.9	92.5	-14.9	40.84	25.6	35.51	5.0	115.0	19.6
	Running 3 Month	63.4	89.0	46.6	3.0	136.0	83.5	68.03	-5.5	68.58	3.6	99.2	-8.8	43.12	78.5	31.96	6.7	134.9	67.3
	Running 12 Month	56.0	26.2	48.7	-2.0	115.1	28.8	68.07	-9.3	72.51	4.5	93.9	-13.2	38.12	14.4	35.29	2.4	108.0	11.8
Tuesday	Current Month	69.0	62.4	53.5	31.1	128.9	23.8	72.20	0.3	66.90	0.5	107.9	-0.3	49.82	62.8	35.83	31.8	139.1	23.5
	Year To Date	60.3	23.1	53.0	0.8	113.7	22.0	71.97	-2.7	75.25	10.0	95.6	-11.6	43.38	19.7	39.91	10.9	108.7	7.9
	Running 3 Month	60.8	40.1	50.7	1.3	119.9	38.3	70.76	-2.9	67.68	0.5	104.6	-3.4	43.00	36.0	34.30	1.8	125.4	33.6
	Running 12 Month	56.3	15.0	52.9	-0.7	106.5	15.9	71.36	-5.5	73.46	5.0	97.1	-10.0	40.18	8.7	38.84	4.3	103.5	4.3
Wednesday	Current Month	57.5	43.8	59.5	34.0	96.7	7.3	64.15	-12.1	66.75	-0.7	96.1	-11.5	36.88	26.4	39.71	33.1	92.9	-5.1
	Year To Date	59.0	22.9	53.4	1.4	110.4	21.1	70.38	-4.5	75.34	10.4	93.4	-13.4	41.51	17.4	40.25	12.0	103.1	4.8
	Running 3 Month	55.1	36.6	53.4	3.8	103.2	31.7	68.45	-7.6	68.63	2.3	99.7	-9.7	37.70	26.2	36.62	6.1	102.9	18.9
	Running 12 Month	55.7	14.5	52.8	-1.4	105.4	16.1	69.69	-7.3	73.62	5.5	94.7	-12.1	38.78	6.1	38.89	4.0	99.7	2.0
Thursday	Current Month	68.5	82.2	61.1	43.4	112.0	27.1	71.16	-2.1	66.78	-3.5	106.6	1.5	48.74	78.3	40.83	38.3	119.4	29.0
	Year To Date	56.7	26.5	54.1	8.1	104.8	17.0	71.93	-1.8	76.50	10.7	94.0	-11.3	40.78	24.3	41.37	19.7	98.6	3.8
	Running 3 Month	56.2	46.6	53.5	10.0	104.9	33.2	71.90	-3.3	68.23	-0.3	105.4	-3.0	40.38	41.7	36.52	9.7	110.6	29.2
	Running 12 Month	53.5	18.6	54.3	6.5	98.6	11.4	71.18	-4.4	75.04	6.3	94.9	-10.0	38.11	13.4	40.73	13.1	93.6	0.2
Friday	Current Month	69.6	123.1	62.6	36.2	111.2	63.8	74.66	0.1	70.06	-1.4	106.6	1.5	51.96	123.3	43.84	34.3	118.5	66.2
	Year To Date	54.2	38.7	54.1	13.7	100.2	22.0	74.14	0.2	78.29	13.3	94.7	-11.5	40.21	39.0	42.39	28.8	94.9	8.0
	Running 3 Month	59.2	88.7	50.9	15.8	116.4	63.0	72.97	-5.2	70.56	1.5	103.4	-6.6	43.22	78.9	35.90	17.5	120.4	52.2
	Running 12 Month	50.7	28.5	53.0	10.2	95.7	16.7	73.28	-2.4	76.33	8.8	96.0	-10.4	37.18	25.4	40.48	19.9	91.8	4.6
Saturday	Current Month	68.8	173.0	66.9	45.7	102.8	87.4	73.12	-4.1	69.53	-6.2	105.2	2.2	50.30	161.8	46.54	36.7	108.1	91.6
	Year To Date	52.7	42.2	54.3	23.3	97.0	15.3	76.34	4.0	79.06	14.7	96.6	-9.3	40.25	47.8	42.96	41.4	93.7	4.6
	Running 3 Month	59.5	105.3	53.2	23.7	111.8	66.0	74.60	-1.3	70.78	0.0	105.4	-1.3	44.41	102.6	37.68	23.7	117.9	63.8
	Running 12 Month	48.9	28.7	53.0	21.7	92.4	5.8	75.46	0.8	77.09	10.8	97.9	-9.0	36.92	29.8	40.84	34.8	90.4	-3.7
Weekday/Weekend																			
Weekday (Sun-Thu)	Current Month	63.7	94.5	54.3	43.0	117.4	36.0	69.51	-4.8	66.44	-0.1	104.6	-4.7	44.29	85.2	36.06	42.8	122.8	29.7
	Year To Date	55.9	26.6	49.0	2.6	114.0	23.4	71.05	-3.6	75.25	10.7	94.4	-12.9	39.72	22.0	36.90	13.6	107.6	7.5
	Running 3 Month	56.8	60.0	47.5	4.8	119.7	52.7	69.76	-5.4	68.26	2.0	102.2	-7.2	39.66	51.4	32.40	6.8	122.4	41.7
	Running 12 Month	52.6	18.5	49.1	2.0	107.1	16.2	70.39	-6.0	73.58	5.9	95.7	-11.2	37.03	11.4	36.15	8.0	102.4	3.2
Weekend (Fri-Sat)	Current Month	69.2	145.4	64.8	40.9	106.9	74.1	73.89	-1.9	69.78	-3.8	105.9	2.0	51.13	140.7	45.19	35.5	113.2	77.6
	Year To Date	53.5	40.4	54.2	18.3	98.6	18.7	75.23	2.1	78.68	14.0	95.6	-10.5	40.23	43.3	42.68	34.8	94.3	6.3
	Running 3 Month	59.4	97.0	52.1	19.7	114.1	64.5	73.79	-3.3	70.67	0.7	104.4	-4.0	43.82	90.5	36.79	20.6	119.1	58.0
	Running 12 Month	49.8	28.6	53.0	15.6	94.0	11.2	74.35	-0.8	76.71	9.8	96.9	-9.7	37.05	27.6	40.66	26.9	91.1	0.5
Total	Current Month	65.5	109.3	57.7	42.2	113.6	47.2	71.00	-3.6	67.65	-1.5	105.0	-2.1	46.50	101.7	39.00	40.0	119.2	44.1
	Year To Date	55.2	30.2	50.5	7.0	109.2	21.7	72.22	-2.0	76.32	11.8	94.6	-12.4	39.87	27.5	38.57	19.6	103.4	6.7
	Running 3 Month	57.6	69.5	48.8	8.9	118.0	55.7	70.93	-4.6	68.98	1.7	102.8	-6.2	40.83	61.7	33.64	10.7	121.4	46.0
	Running 12 Month	51.8	21.2	50.2	5.7	103.1	14.7	71.47	-4.6	74.53	7.1	95.9	-10.9	37.03	15.7	37.44	13.2	98.9	2.1

Tab 7 - Daily Data for the Month

Sleep Inn & Suites Hennessey North 522 N Main St Hennessey, OK 73742-1019 Phone: (405) 853-2126
STR # 62749 ChainID: OK223 MgtCo: None Owner: None
For the Month of: October 2021 Date Created: November 18, 2021 Daily Competitive Set Data Excludes Subject Property



	Fr	Sa	Su	Mo	Tu	We	Th	Fr	Sa	Su	Mo	Tu	We	Th	Fr	Sa	Su	Mo	Tu	We	Th	Fr	Sa	Su	Mo	Tu	We	Th	Fr	Sa	Su	
Occupancy (%)	October																															
	1	2	3	4	5	6	7	8	9	10	11	12	13	14	15	16	17	18	19	20	21	22	23	24	25	26	27	28	29	30	31	
	My Property	98.0	64.0	70.0	66.0	90.0	60.0	64.0	60.0	76.0	58.0	68.0	68.0	74.0	98.0	76.0	72.0	62.0	64.0	58.0	36.0	42.0	42.0	76.0	60.0	74.0	60.0	60.0	70.0	72.0	56.0	36.0
	Competitive Set	59.0	65.4	45.9	48.8	53.7	66.8	58.0	51.7	56.1	42.9	55.1	43.9	56.6	64.4	70.2	69.8	55.1	67.8	69.3	66.3	63.4	66.8	73.2	38.0	45.9	45.4	56.6	62.4	67.3	39.5	
	Index (MPI)	166.0	97.9	152.7	135.3	167.7	89.8	110.3	116.0	135.5	135.1	123.4	154.9	130.8	152.2	108.2	103.2	112.5	94.4	83.7	54.3	66.2	62.8	103.9	157.7	161.4	132.3	123.7	115.3	83.2	91.1	

% Chg																															
My Property	1533.3	540.0	337.5	450.0	164.7	100.0	220.0	275.0	375.0	480.0	112.5	112.5	362.5	308.3	192.3	414.3	520.0	190.9	262.5	80.0	200.0	425.0	660.0	114.3	85.0	-31.8	-36.2	-28.6	-28.0	-26.3	-18.2
Competitive Set	-4.0	3.9	2.2	16.3	11.1	29.2	-9.8	-38.7	-33.5	-9.3	-13.7	-26.2	-3.3	21.1	7.5	21.2	63.8	37.6	14.5	1.5	18.2	57.5	51.5	27.9	3.3	-36.3	-31.0	-24.3	-18.8	-49.4	
Index (MPI)	1600.8	516.1	328.2	373.0	138.2	54.7	255.0	512.0	614.6	539.3	146.3	188.1	378.4	237.2	172.0	324.4	278.6	111.4	216.5	77.4	153.8	233.4	401.6	67.6	79.1	7.0	3.4	-4.9	-9.2	61.6	

ADR	October																															
	1	2	3	4	5	6	7	8	9	10	11	12	13	14	15	16	17	18	19	20	21	22	23	24	25	26	27	28	29	30	31	
	My Property	82.29	78.74	82.40	61.26	75.64	69.05	76.75	70.64	70.28	68.55	71.14	69.17	70.06	71.51	68.98	69.27	74.24	63.31	80.95	44.37	71.88	75.39	73.82	61.97	70.04	62.00	63.81	65.12	73.20	74.53	73.53
	Competitive Set	72.50	70.37	63.09	66.11	67.10	68.52	69.14	65.73	67.93	64.72	64.95	65.70	69.08	64.01	78.24	77.73	71.79	66.87	69.52	66.67	67.58	67.04	68.17	64.18	71.41	69.47	71.57	71.29	69.00	69.28	
	Index (ARI)	113.5	111.9	130.6	92.7	112.7	100.8	111.0	107.5	103.5	105.9	109.5	105.3	101.4	111.7	88.2	89.1	103.4	94.7	116.4	66.5	106.4	112.5	108.3	96.6	98.1	89.2	91.0	102.7	108.0	106.1	

% Chg																															
My Property	-22.4	-8.7	-10.2	-25.3	-9.7	-17.9	-6.3	-29.1	-23.6	-19.2	0.4	-6.7	-15.1	-13.9	-14.8	-31.5	-18.1	-10.6	10.1	-40.7	10.8	16.8	15.9	-10.0	5.1	-6.6	-5.3	-3.4	7.9	8.5	5.4
Competitive Set	3.9	2.7	-8.8	18.9	6.5	3.5	0.7	-14.7	-12.9	-0.6	1.5	-0.5	4.2	-5.7	9.1	14.7	24.5	2.6	7.1	1.3	-3.5	0.4	-1.2	0.0	4.7	-2.4	0.3	4.0	-16.8	-1.9	
Index (ARI)	-25.3	-11.1	-1.6	-37.2	-15.2	-20.6	-7.0	-16.9	-12.3	-18.7	-1.1	-6.3	-18.5	-8.6	-21.9	-40.3	-34.2	-12.9	2.8	-41.5	14.8	16.3	17.3	-10.0	0.3	-4.3	-3.7	3.8	30.5	7.5	

RevPAR	October																															
	1	2	3	4	5	6	7	8	9	10	11	12	13	14	15	16	17	18	19	20	21	22	23	24	25	26	27	28	29	30	31	
	My Property	80.64	50.39	57.68	40.43	68.08	41.43	49.12	42.38	53.41	39.76	48.38	47.03	51.85	70.08	52.42	49.87	46.03	40.52	46.95	15.97	30.19	31.67	56.10	37.18	51.83	37.20	38.28	45.59	52.71	41.74	26.47
	Competitive Set	42.79	46.00	28.93	32.25	36.01	45.79	40.13	33.99	38.11	27.78	35.80	28.84	39.09	41.21	54.96	54.22	39.57	45.34	48.16	44.23	42.85	44.80	49.88	24.42	32.74	31.52	40.50	44.51	46.45	27.37	
Index (RGI)	188.5	109.6	199.4	125.4	189.1	90.5	122.4	124.7	140.2	143.1	135.1	163.1	132.6	170.0	95.4	92.0	116.3	89.4	97.5	36.1	70.5	70.7	112.5	152.3	158.3	118.0		112.6	118.4	89.9	96.7	

% Chg																															
My Property	1167.4	484.5	292.9	310.9	139.1	64.3	199.9	165.8	262.8	368.8	113.3	98.2	292.7	251.7	149.0	252.4	407.7	160.0	298.9	6.7	232.5	513.2	781.0	92.8	94.4	-36.3	-39.6	-31.0	-22.3	-20.1	-13.7
Competitive Set	-0.2	6.7	-6.8	38.3	18.3	33.8	-9.2	-47.7	-42.1	-9.8	-12.4	-26.6	0.7	14.2	17.2	39.1	103.9	41.2	22.7	2.8	14.1	58.1	49.7	27.9	8.2	-37.9	-30.7	-21.2	-32.5	-50.3	
Index (RGI)	1170.5	448.0	321.4	197.1	102.1	22.8	230.2	408.6	526.5	419.7	143.6	170.0	289.9	208.1	112.4	153.4	149.0	84.1	225.3	3.8	191.5	287.8	488.6	50.8	79.7	2.5	-0.4	-1.4	18.4	73.7	

2021 © CoStar Group. This STR Report is a publication of STR, LLC and STR Global, Ltd., CoStar Group companies, and is intended solely for use by paid subscribers. The information in the STR Report is provided on an "as is" and "as available" basis and should not be construed as investment, tax, accounting or legal advice. Reproduction or distribution of this STR Report, in whole or part, without written permission is prohibited and subject to legal action. If you have received this report and are NOT a subscriber to this STR Report, please contact us immediately. Source: 2021 STR, LLC / STR Global, Ltd. trading as "STR".



How can we assist you?

Glossary:

For all STR definitions, please click here or visit www.str.com/data-insights/resources/glossary

Frequently Asked Questions (FAQ):

For all STR FAQs, please click here or visit www.str.com/data-insights/resources/FAQ

For additional support, please [contact](#) your regional office.

For the latest in industry news, visit HotelNewsNow.com.

To learn more about the Hotel Data Conference, visit HotelDataConference.com.