

STR # 62749 / Created August 17, 2023

Monthly STAR Report : Sleep Inn & Suites Hennessey North

For the Month of: July 2023

Currency: US Dollar / Competitive Set Data Excludes Subject Property



Table Of Contents	1
Monthly Performance at a Glance	2
STAR Summary	3
Competitive Set Report	4
Response Report	5
Day of Week & Weekday/Weekend	6
Daily Data for the Month	7
Help	8

Corporate North American Headquarters
T: +1 (615) 824 8664
support@str.com www.str.com

International Headquarters
T: +44 (0) 207 922 1930
hotelinfo@str.com www.str.com

2023 © CoStar Group. This STR Report is a publication of STR, LLC and STR Global, Ltd., CoStar Group companies, and is intended solely for use by paid subscribers. The information in the STR Report is provided on an "as is" and "as available" basis and should not be construed as investment, tax, accounting or legal advice. Reproduction or distribution of this STR Report, in whole or part, without written permission is prohibited and subject to legal action. If you have received this report and are NOT a subscriber to this STR Report, please contact us immediately. Source: 2023 STR, LLC / STR Global, Ltd. trading as "STR".

Tab 2 - Monthly Performance at a Glance - My Property vs. Competitive Set

Sleep Inn & Suites Hennessey North 522 N Main St Hennessey, OK 73742-1019 Phone: (405) 853-2126

STR # 62749 ChainID: OK223 MgtCo: None Owner: None

For the Month of: July 2023 Date Created: August 17, 2023 Monthly Competitive Set Data Excludes Subject Property

July 2023

	Occupancy (%)			ADR			RevPAR		
	My Prop	Comp Set	Index (MPI)	My Prop	Comp Set	Index (ARI)	My Prop	Comp Set	Index (RGI)
Current Month	43.6	51.9	84.0	58.39	83.00	70.4	25.46	43.06	59.1
Year To Date	46.3	55.1	84.1	65.70	86.64	75.8	30.43	47.75	63.7
Running 3 Month	42.2	61.0	69.3	62.74	88.07	71.2	26.50	53.70	49.4
Running 12 Month	45.4	53.7	84.7	68.34	85.92	79.5	31.05	46.10	67.3

July 2023 vs. 2022 Percent Change (%)

	Occupancy			ADR			RevPAR		
	My Prop	Comp Set	Index (MPI)	My Prop	Comp Set	Index (ARI)	My Prop	Comp Set	Index (RGI)
Current Month	-46.7	-19.9	-33.5	-16.2	3.6	-19.2	-55.4	-16.9	-46.2
Year To Date	-24.6	-3.7	-21.8	-10.1	2.6	-12.4	-32.2	-1.1	-31.4
Running 3 Month	-38.3	-3.2	-36.2	-14.4	2.7	-16.7	-47.2	-0.6	-46.9
Running 12 Month	-21.8	-1.3	-20.8	-5.6	3.2	-8.5	-26.2	1.9	-27.6

Tab 3 - STAR Summary - My Property vs. Comp Set and Industry Segments

Sleep Inn & Suites Hennessey North 522 N Main St Hennessey, OK 73742-1019 Phone: (405) 853-2126

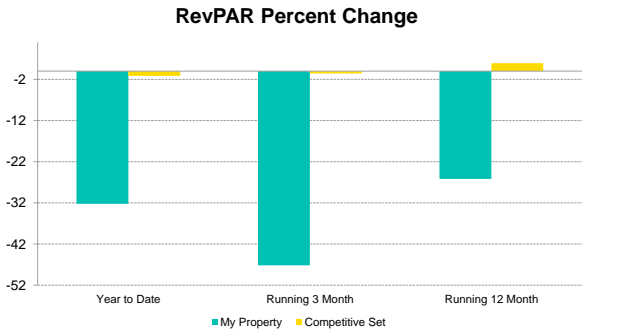
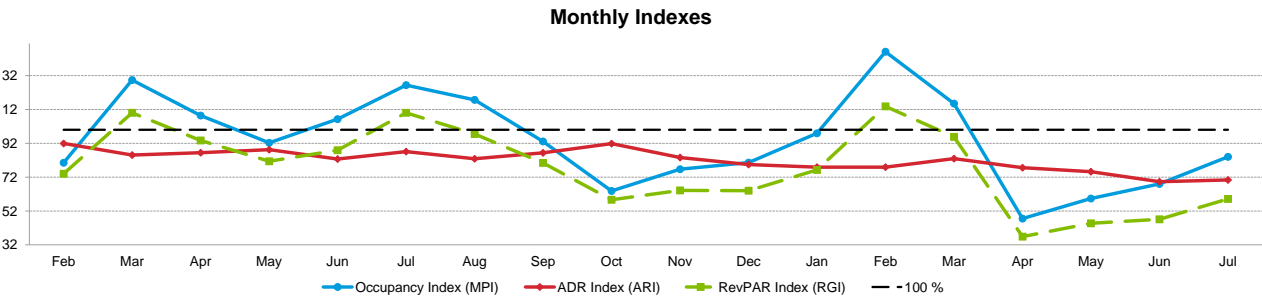
STR # 62749 ChainID: OK223 MgtCo: None Owner: None

For the Month of: July 2023 Date Created: August 17, 2023 Monthly Competitive Set Data Excludes Subject Property

		Occupancy (%)								Supply			
		Current Month	% Chg	Year to Date	% Chg	Running 3 Month	% Chg	Running 12 Month	% Chg	Month % Chg	YTD % Chg	Run 3 Mon % Chg	Run 12 Mon % Chg
Sleep Inn & Suites Hennessey North		43.6	-46.7	46.3	-24.6	42.2	-38.3	45.4	-21.8	-3.2	-0.9	-2.2	-0.5
Market: Oklahoma Area		51.7	-4.2	51.2	-1.4	54.5	-0.4	50.6	-0.9	-1.1	-1.5	-1.0	-1.3
Market Class: Midscale Class		57.1	-1.8	54.4	-0.5	57.5	-1.2	54.0	-1.0	1.6	-0.7	1.6	-1.3
Submarket: Oklahoma West Area		51.0	0.4	48.8	-1.3	52.6	1.3	47.9	-2.7	-1.7	-1.0	-1.5	0.1
Submarket Scale: Midscale Chains		63.2	2.5	60.2	-1.0	65.8	3.3	59.3	-0.7	0.0	1.7	0.8	2.2
Competitive Set: Competitors		51.9	-19.9	55.1	-3.7	61.0	-3.2	53.7	-1.3	0.0	0.0	0.0	0.0
		Average Daily Rate								Demand			
		Current Month	% Chg	Year to Date	% Chg	Running 3 Month	% Chg	Running 12 Month	% Chg	Month % Chg	YTD % Chg	Run 3 Mon % Chg	Run 12 Mon % Chg
Sleep Inn & Suites Hennessey North		58.39	-16.2	65.70	-10.1	62.74	-14.4	68.34	-5.6	-48.4	-25.3	-39.6	-22.3
Market: Oklahoma Area		85.87	4.7	84.37	4.4	87.05	4.4	83.94	4.9	-5.3	-2.8	-1.4	-2.2
Market Class: Midscale Class		84.09	2.2	82.09	3.5	83.75	2.5	82.02	4.2	-0.2	-1.2	0.4	-2.3
Submarket: Oklahoma West Area		82.27	5.9	79.98	3.5	82.54	4.6	79.33	3.2	-1.4	-2.3	-0.2	-2.6
Submarket Scale: Midscale Chains		96.74	5.2	94.79	3.0	97.60	3.3	94.21	2.3	2.5	0.7	4.1	1.4
Competitive Set: Competitors		83.00	3.6	86.64	2.6	88.07	2.7	85.92	3.2	-19.9	-3.7	-3.2	-1.3
		RevPAR								Revenue			
		Current Month	% Chg	Year to Date	% Chg	Running 3 Month	% Chg	Running 12 Month	% Chg	Month % Chg	YTD % Chg	Run 3 Mon % Chg	Run 12 Mon % Chg
Sleep Inn & Suites Hennessey North		25.46	-55.4	30.43	-32.2	26.50	-47.2	31.05	-26.2	-56.8	-32.9	-48.3	-26.6
Market: Oklahoma Area		44.43	0.3	43.17	3.0	47.41	3.9	42.50	4.0	-0.8	1.4	2.8	2.6
Market Class: Midscale Class		48.04	0.4	44.62	3.0	48.12	1.3	44.32	3.1	2.0	2.2	2.9	1.8
Submarket: Oklahoma West Area		41.95	6.2	38.99	2.2	43.41	5.9	37.99	0.5	4.4	1.2	4.3	0.5
Submarket Scale: Midscale Chains		61.15	7.9	57.11	2.0	64.19	6.6	55.89	1.6	7.9	3.7	7.5	3.8
Competitive Set: Competitors		43.06	-16.9	47.75	-1.1	53.70	-0.6	46.10	1.9	-16.9	-1.1	-0.6	1.9
		Census/Sample - Properties & Rooms											
		Census		Sample		Sample %							
		Properties	Rooms	Properties	Rooms	Rooms							
Market: Oklahoma Area		513	31357	241	17303	55.2							
Market Class: Midscale Class		61	4509	42	3180	70.5							
Submarket: Oklahoma West Area		184	10524	89	6682	63.5							
Submarket Scale: Midscale Chains		52	3937	52	3937	100.0							
Competitive Set: Competitors		5	334	5	334	100.0							

Tab 4 - Competitive Set Report

Sleep Inn & Suites Hennessey North 522 N Main St Hennessey, OK 73742-1019 Phone: (405) 853-2126
STR # 62749 ChainID: OK223 MgtCo: None Owner: None
For the Month of: July 2023 Date Created: August 17, 2023 Monthly Competitive Set Data Excludes Subject Property



Occupancy (%)	2022												2023						
	Feb	Mar	Apr	May	Jun	Jul	Aug	Sep	Oct	Nov	Dec	Jan	Feb	Mar	Apr	May	Jun	Jul	
My Property	45.1	72.2	53.0	56.5	67.1	81.8	58.3	50.7	39.2	38.9	34.1	41.9	68.6	58.9	29.3	41.1	42.0	43.6	
Competitive Set	56.1	55.8	48.9	61.2	63.1	64.7	49.6	54.4	61.4	50.7	42.3	42.8	47.0	51.0	61.7	69.2	61.8	51.9	
Index (MPI)	80.5	129.4	108.4	92.3	106.3	126.3	117.7	93.2	63.8	76.7	80.6	97.9	146.1	115.5	47.5	59.4	67.9	84.0	
Rank	4 of 6	2 of 6	3 of 6	4 of 6	3 of 6	1 of 6	2 of 6	5 of 6	6 of 6	5 of 6	5 of 6	4 of 6	1 of 6	2 of 6	6 of 6	6 of 6	6 of 6	5 of 6	

% Chg																		
My Property	-5.5	45.5	-5.8	-7.3	-12.8	64.9	24.5	-16.2	-40.2	-6.0	-36.0	-20.9	52.1	-18.4	-44.7	-27.1	-37.4	-46.7
Competitive Set	26.2	2.1	-7.9	-1.3	-13.3	26.5	12.4	5.4	3.4	2.4	-10.7	-15.5	-16.2	-8.6	26.3	13.2	-2.0	-19.9
Index (MPI)	-25.1	42.5	2.3	-6.1	0.6	30.3	10.8	-20.5	-42.1	-8.2	-28.3	-6.4	81.4	-10.8	-56.2	-35.6	-36.1	-33.5
Rank	4 of 6	1 of 6	2 of 6	4 of 6	3 of 6	2 of 6	2 of 6	6 of 6	6 of 6	6 of 6	6 of 6	4 of 6	1 of 6	5 of 6	6 of 6	6 of 6	6 of 6	6 of 6

Year To Date			Running 3 Month			Running 12 Month		
2021	2022	2023	2021	2022	2023	2021	2022	2023
54.2	61.5	46.3	62.3	68.5	42.2	45.9	58.1	45.4
53.6	57.2	55.1	61.9	63.0	61.0	53.1	54.3	53.7
101.1	107.4	84.1	100.7	108.7	69.3	86.4	106.9	84.7
4 of 6	3 of 6	5 of 6	3 of 6	2 of 6	6 of 6	4 of 6	3 of 6	5 of 6

ADR	2022												2023						
	Feb	Mar	Apr	May	Jun	Jul	Aug	Sep	Oct	Nov	Dec	Jan	Feb	Mar	Apr	May	Jun	Jul	
My Property	71.22	72.93	74.67	77.22	74.34	69.71	71.36	73.70	76.31	70.62	68.11	68.40	66.93	68.27	66.47	69.74	60.38	58.39	
Competitive Set	77.48	85.77	86.38	87.53	89.92	80.07	86.13	85.32	83.11	84.49	85.74	87.81	85.91	82.31	85.70	92.70	87.11	83.00	
Index (ARI)	91.9	85.0	86.4	88.2	82.7	87.1	82.9	86.4	91.8	83.6	79.4	77.9	77.9	82.9	77.6	75.2	69.3	70.4	
Rank	4 of 6	4 of 6	4 of 6	5 of 6	5 of 6	4 of 6	5 of 6	4 of 6	4 of 6	5 of 6	5 of 6	4 of 6	5 of 6	4 of 6	5 of 6	5 of 6	5 of 6	5 of 6	

% Chg																		
My Property	5.1	8.4	4.5	-1.9	-3.4	-7.6	1.0	3.7	7.5	-3.5	-3.9	-5.2	-6.0	-6.4	-11.0	-9.7	-18.8	-16.2
Competitive Set	4.4	2.9	4.7	-2.4	-13.1	-14.4	-1.0	3.8	6.4	2.5	9.7	5.6	10.9	-4.0	-0.8	5.9	-3.1	3.6
Index (ARI)	0.6	5.3	-0.2	0.5	11.1	7.8	2.0	-0.1	1.0	-5.8	-12.4	-10.2	-15.3	-2.4	-10.3	-14.7	-16.2	-19.2
Rank	2 of 6	2 of 6	3 of 6	2 of 6	2 of 6	4 of 6	2 of 6	4 of 6	1 of 6	5 of 6	6 of 6	6 of 6	6 of 6	4 of 6	5 of 6	6 of 6	6 of 6	6 of 6

Year To Date			Running 3 Month			Running 12 Month		
2021	2022	2023	2021	2022	2023	2021	2022	2023
72.81	73.05	65.70	77.16	73.28	62.74	72.19	72.36	68.34
87.85	84.41	86.64	96.05	85.73	88.07	83.18	83.22	85.92
82.9	86.5	75.8	80.3	85.5	71.2	86.8	86.9	79.5
6 of 6	4 of 6	5 of 6	6 of 6	4 of 6	5 of 6	5 of 6	4 of 6	5 of 6

RevPAR	2022												2023						
	Feb	Mar	Apr	May	Jun	Jul	Aug	Sep	Oct	Nov	Dec	Jan	Feb	Mar	Apr	May	Jun	Jul	
My Property	32.15	52.65	39.58	43.59	49.86	57.03	41.62	37.34	29.88	27.45	23.20	28.64	45.94	40.22	19.50	28.69	25.36	25.46	
Competitive Set	43.44	47.85	42.23	53.54	56.73	51.85	42.68	46.41	51.00	42.80	36.26	37.55	40.37	41.98	52.91	64.19	53.85	43.06	
Index (RGI)	74.0	110.0	93.7	81.4	87.9	110.0	97.5	80.5	58.6	64.1	64.0	76.3	113.8	95.8	36.9	44.7	47.1	59.1	
Rank	3 of 6	3 of 6	4 of 6	4 of 6	4 of 6	3 of 6	3 of 6	5 of 6	5 of 6	5 of 6	5 of 6	4 of 6	3 of 6	4 of 6	6 of 6	6 of 6	5 of 6	5 of 6	

% Chg																		
My Property	-0.7	57.7	-1.6	-9.1	-15.8	52.3	25.7	-13.1	-35.7	-9.2	-38.5	-25.0	42.9	-23.6	-50.7	-34.2	-49.1	-55.4
Competitive Set	31.8	5.1	-3.6	-3.7	-24.7	8.3	11.3	9.4	10.0	5.0	-2.0	-10.7	-7.1	-12.3	25.3	19.9	-5.1	-16.9
Index (RGI)	-24.6	50.1	2.1	-5.6	11.7	40.5	13.0	-20.5	-41.6	-13.5	-37.2	-15.9	53.8	-12.9	-60.7	-45.1	-46.4	-46.2
Rank	5 of 6	1 of 6	3 of 6	3 of 6	3 of 6	1 of 6	2 of 6	6 of 6	6 of 6	6 of 6	6 of 6	5 of 6	1 of 6	5 of 6	6 of 6	6 of 6	6 of 6	6 of 6

Year To Date			Running 3 Month			Running 12 Month		
2021	2022	2023	2021	2022	2023	2021	2022	2023
39.45	44.90	30.43	48.09	50.16	26.50	33.11	42.06	31.05
47.07	48.30	47.75	59.42	54.01	53.70	44.17	45.23	46.10
83.8	93.0	63.7	80.9	92.9	49.4	75.0	93.0	67.3
4 of 6	4 of 6	5 of 6	5 of 6	4 of 6	6 of 6	5 of 6	4 of 6	5 of 6

Year To Date			Running 3 Month			Running 12 Month		
2021	2022	2023	2021	2022	2023	2021	2022	2023
16.5	13.8	-32.2	117.7	4.3	-47.2	-17.7	27.0	-26.2
28.7	2.6	-1.1	65.0	-9.1	-0.6	11.7	2.4	1.9
-9.5	10.9	-31.4	31.9	14.8	-46.9	-26.3	24.1	-27.6
5 of 6	2 of 6	6 of 6	1 of 6	3 of 6	6 of 6	6 of 6	1 of 6	6 of 6

Tab 5 - Response Report

Sleep Inn & Suites Hennessey North 522 N Main St Hennessey, OK 73742-1019 Phone: (405) 853-2126
STR # 62749 ChainID: OK223 MgtCo: None Owner: None
For the Month of: July 2023 Date Created: August 17, 2023

This Year
July 4th - Independence Day

July 2023 (This Year)

Sun	Mon	Tue	Wed	Thu	Fri	Sat
						1
2	3	4	5	6	7	8
9	10	11	12	13	14	15
16	17	18	19	20	21	22
23	24	25	26	27	28	29
30	31					

July 2022 (Last Year)

Sun	Mon	Tue	Wed	Thu	Fri	Sat
					1	2
3	4	5	6	7	8	9
10	11	12	13	14	15	16
17	18	19	20	21	22	23
24	25	26	27	28	29	30
31						

Last Year
Jul 4th - Independence Day

STR#	Name	City, State	Zip	Phone	Rooms	Open Date
62749	Sleep Inn & Suites Hennessey North	Hennessey, OK	73742-1019	(405) 853-2126	50	201308
36764	Baymont Inn & Suites Enid	Enid, OK	73703	(580) 234-6800	58	199806
63401	Country Inn & Suites Enid	Enid, OK	73703	(580) 599-0372	77	201411
63750	Best Western Plus Fairview Inn & Suites	Fairview, OK	73737	(580) 227-2880	52	201601
64464	La Quinta Inns & Suites Enid	Enid, OK	73703	(580) 233-7100	70	201511
68907	Holiday Inn Express & Suites Kingfisher	Kingfisher, OK	73750	(405) 375-3210	77	201911
					384	

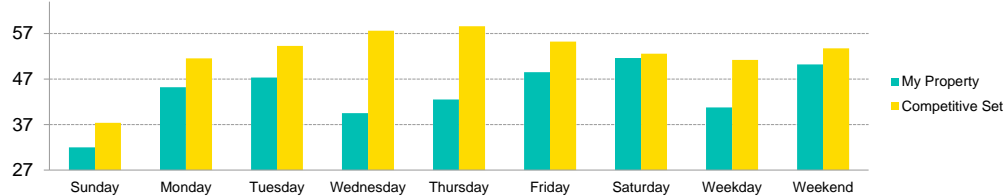
2021				2022												2023							
Aug	Sep	Oct	Nov	Dec	Jan	Feb	Mar	Apr	May	Jun	Jul	Aug	Sep	Oct	Nov	Dec	Jan	Feb	Mar	Apr	May	Jun	Jul

Data received:
☐ = Monthly Only
☒ = Monthly & Daily

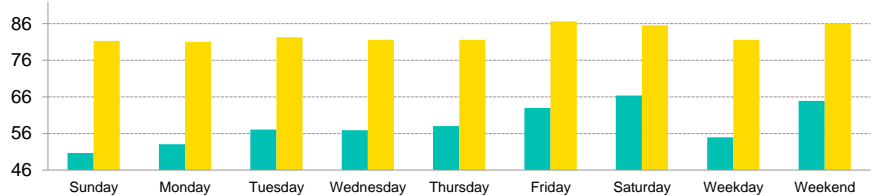
Tab 6 - Day of Week and Weekday/Weekend Report

Sleep Inn & Suites Hennessey North 522 N Main St Hennessey, OK 73742-1019 Phone: (405) 853-2126
STR # 62749 ChainID: OK223 MgtCo: None Owner: None
For the Month of: July 2023 Date Created: August 17, 2023 Monthly Competitive Set Data Excludes Subject Property

Current Month Occupancy



Current Month ADR

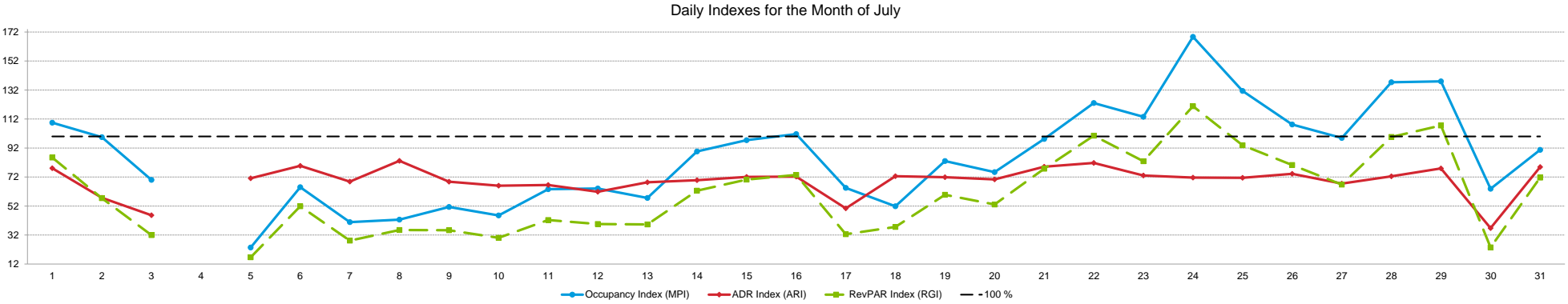


		Occupancy (%)						Average Daily Rate						RevPAR					
Day of Week	Time Period	My Property		Competitive Set		Index (MPI)		My Property		Competitive Set		Index (ARI)		My Property		Competitive Set		Index (RGI)	
			% Chg		% Chg		% Chg		% Chg		% Chg		% Chg		% Chg		% Chg		% Chg
Sunday	Current Month	32.0	-57.9	37.4	-24.1	85.6	-44.5	50.67	-24.3	81.29	4.4	62.3	-27.5	16.21	-68.1	30.37	-20.8	53.4	-59.8
	Year To Date	37.9	-28.3	38.6	-14.1	98.2	-16.6	64.98	-7.4	85.38	4.0	76.1	-10.9	24.61	-33.6	32.93	-10.7	74.7	-25.7
	Running 3 Month	33.2	-43.0	45.7	-8.1	72.5	-37.9	60.70	-14.2	87.24	2.9	69.6	-16.7	20.13	-51.1	39.90	-5.4	50.5	-48.3
	Running 12 Month	37.2	-26.4	37.9	-6.8	98.2	-21.0	67.17	-4.3	84.34	3.7	79.6	-7.7	25.00	-29.6	31.96	-3.4	78.2	-27.1
Monday	Current Month	45.2	-43.1	51.6	-19.9	87.7	-29.0	53.04	-23.1	81.02	3.3	65.5	-25.6	23.97	-56.3	41.77	-17.2	57.4	-47.2
	Year To Date	47.2	-23.9	56.3	-2.6	83.8	-21.8	63.23	-12.1	84.66	2.1	74.7	-13.9	29.82	-33.1	47.64	-0.6	62.6	-32.7
	Running 3 Month	43.3	-36.9	59.2	-3.6	73.1	-34.5	58.73	-18.6	85.20	1.4	68.9	-19.7	25.42	-48.6	50.47	-2.2	50.4	-47.5
	Running 12 Month	45.8	-24.0	55.0	0.3	83.3	-24.2	67.07	-4.6	83.84	2.0	80.0	-6.6	30.70	-27.5	46.09	2.3	66.6	-29.1
Tuesday	Current Month	47.3	-45.3	54.3	-23.0	87.2	-29.0	57.06	-18.4	82.29	5.0	69.3	-22.3	27.01	-55.4	44.66	-19.1	60.5	-44.8
	Year To Date	48.4	-24.5	60.5	0.3	80.0	-24.7	65.12	-10.3	85.78	2.6	75.9	-12.6	31.53	-32.3	51.93	2.9	60.7	-34.2
	Running 3 Month	41.7	-43.2	64.5	-2.3	64.6	-41.9	60.29	-17.3	87.23	4.8	69.1	-21.0	25.12	-53.0	56.29	2.4	44.6	-54.1
	Running 12 Month	47.7	-21.6	58.8	1.3	81.2	-22.6	67.67	-5.8	84.18	2.0	80.4	-7.7	32.30	-26.1	49.49	3.4	65.3	-28.5
Wednesday	Current Month	39.5	-55.1	57.6	-24.0	68.5	-40.9	56.87	-18.4	81.58	-0.2	69.7	-18.2	22.46	-63.4	47.02	-24.2	47.8	-51.7
	Year To Date	47.0	-28.3	61.2	0.5	76.8	-28.6	64.01	-11.6	86.54	2.2	74.0	-13.5	30.08	-36.6	52.98	2.7	56.8	-38.2
	Running 3 Month	42.3	-41.0	65.9	-3.8	64.2	-38.7	58.06	-20.4	86.65	0.2	67.0	-20.6	24.56	-53.0	57.13	-3.6	43.0	-51.3
	Running 12 Month	46.7	-23.1	59.9	2.1	78.1	-24.7	67.51	-5.6	85.92	3.1	78.6	-8.4	31.55	-27.4	51.42	5.2	61.4	-31.0
Thursday	Current Month	42.5	-51.1	58.6	-20.1	72.5	-38.9	58.00	-18.0	81.58	-0.8	71.1	-17.3	24.65	-59.9	47.82	-20.8	51.6	-49.4
	Year To Date	44.6	-29.2	59.2	-1.5	75.4	-28.2	64.51	-11.7	86.12	2.5	74.9	-13.8	28.77	-37.5	50.95	1.0	56.5	-38.1
	Running 3 Month	41.4	-41.1	65.7	-2.2	63.0	-39.8	59.65	-19.0	87.43	2.5	68.2	-21.0	24.69	-52.3	57.47	0.2	43.0	-52.4
	Running 12 Month	44.6	-22.9	57.4	0.8	77.7	-23.5	66.87	-7.5	85.35	3.2	78.3	-10.4	29.83	-28.7	49.01	4.1	60.9	-31.5
Friday	Current Month	48.5	-37.5	55.2	-8.2	87.8	-31.9	62.98	-9.9	86.62	8.5	72.7	-17.0	30.54	-43.7	47.85	-0.4	63.8	-43.5
	Year To Date	48.8	-20.3	57.4	-4.2	85.0	-16.9	68.82	-7.7	89.29	3.1	77.1	-10.5	33.58	-26.5	51.26	-1.2	65.5	-25.6
	Running 3 Month	43.7	-32.7	63.6	-1.2	68.7	-31.9	70.02	-4.5	91.79	4.2	76.3	-8.3	30.59	-35.7	58.37	3.0	52.4	-37.6
	Running 12 Month	47.0	-20.0	55.1	-3.5	85.2	-17.1	70.35	-5.0	88.93	4.3	79.1	-9.0	33.04	-24.0	49.01	0.7	67.4	-24.5
Saturday	Current Month	51.6	-36.1	52.6	-19.0	98.1	-21.2	66.35	-7.3	85.51	5.4	77.6	-12.0	34.24	-40.8	44.96	-14.6	76.2	-30.6
	Year To Date	50.5	-18.3	53.1	-6.6	95.1	-12.6	68.76	-9.8	88.66	2.3	77.6	-11.8	34.70	-26.4	47.07	-4.5	73.7	-22.9
	Running 3 Month	49.4	-32.3	62.4	-3.1	79.2	-30.1	69.82	-9.1	90.57	2.4	77.1	-11.3	34.48	-38.4	56.51	-0.7	61.0	-38.0
	Running 12 Month	48.9	-15.9	51.6	-5.0	94.8	-11.5	71.27	-6.4	88.67	4.2	80.4	-10.2	34.84	-21.3	45.75	-1.0	76.2	-20.5
Weekday/Weekend																			
Weekday (Sun-Thu)	Current Month	40.8	-50.9	51.2	-22.2	79.6	-36.9	54.96	-20.6	81.54	2.1	67.4	-22.3	22.40	-61.0	41.76	-20.6	53.6	-51.0
	Year To Date	45.0	-26.7	55.0	-2.9	81.7	-24.5	64.33	-10.8	85.73	2.6	75.0	-13.0	28.95	-34.6	47.19	-0.4	61.3	-34.4
	Running 3 Month	40.5	-40.7	60.2	-3.5	67.3	-38.5	59.38	-18.1	86.73	2.3	68.5	-20.0	24.05	-51.4	52.23	-1.3	46.1	-50.8
	Running 12 Month	44.4	-23.4	53.8	0.0	82.6	-23.4	67.27	-5.6	84.77	2.8	79.4	-8.1	29.89	-27.7	45.60	2.8	65.5	-29.7
Weekend (Fri-Sat)	Current Month	50.2	-36.6	53.8	-14.0	93.4	-26.2	64.90	-8.3	86.02	6.9	75.5	-14.2	32.60	-41.8	46.24	-8.1	70.5	-36.7
	Year To Date	49.6	-19.3	55.3	-5.3	89.8	-14.8	68.79	-8.8	88.99	2.7	77.3	-11.2	34.14	-26.4	49.17	-2.8	69.4	-24.4
	Running 3 Month	46.5	-32.5	63.0	-2.1	73.9	-31.0	69.91	-7.0	91.19	3.3	76.7	-10.0	32.54	-37.2	57.44	1.1	56.6	-37.9
	Running 12 Month	47.9	-17.9	53.3	-4.2	89.8	-14.3	70.82	-5.7	88.80	4.3	79.7	-9.6	33.94	-22.6	47.38	-0.1	71.6	-22.5
Total	Current Month	43.6	-46.7	51.9	-19.9	84.0	-33.5	58.39	-16.2	83.00	3.6	70.4	-19.2	25.46	-55.4	43.06	-16.9	59.1	-46.2
	Year To Date	46.3	-24.6	55.1	-3.7	84.1	-21.8	65.70	-10.1	86.64	2.6	75.8	-12.4	30.43	-32.2	47.75	-1.1	63.7	-31.4
	Running 3 Month	42.2	-38.3	61.0	-3.2	69.3	-36.2	62.74	-14.4	88.07	2.7	71.2	-16.7	26.50	-47.2	53.70	-0.6	49.4	-46.9
	Running 12 Month	45.4	-21.8	53.7	-1.3	84.7	-20.8	68.34	-5.6	85.92	3.2	79.5	-8.5	31.05	-26.2	46.10	1.9	67.3	-27.6

2023 © CoStar Group. This STR Report is a publication of STR, LLC and STR Global, Ltd., CoStar Group companies, and is intended solely for use by paid subscribers. The information in the STR Report is provided on an "as is" and "as available" basis and should not be construed as investment, tax, accounting or legal advice. Reproduction or distribution of this STR Report, in whole or part, without written permission is prohibited and subject to legal action. If you have received this report and are NOT a subscriber to this STR Report, please contact us immediately. Source: 2023 STR, LLC / STR Global, Ltd. trading as "STR".

Tab 7 - Daily Data for the Month

Sleep Inn & Suites Hennessey North 522 N Main St Hennessey, OK 73742-1019 Phone: (405) 853-2126
STR # 62749 ChainID: OK223 MgtCo: None Owner: None
For the Month of: July 2023 Date Created: August 17, 2023 Daily Competitive Set Data Excludes Subject Property



Occupancy (%)	July																														
	1	2	3	4	5	6	7	8	9	10	11	12	13	14	15	16	17	18	19	20	21	22	23	24	25	26	27	28	29	30	31
My Property	58.0	42.0	26.0		14.0	44.0	24.0	24.0	20.0	24.0	36.0	38.0	36.0	62.0	70.0	42.0	40.0	36.0	48.0	42.0	50.0	56.0	34.0	86.0	70.0	58.0	48.0	58.0	50.0	22.0	50.0
Competitive Set	53.0	42.2	37.1	37.7	59.9	67.7	58.7	56.3	38.9	52.7	56.6	59.3	62.6	69.2	71.9	41.3	62.0	69.5	57.8	55.7	50.9	45.5	29.9	51.0	53.3	53.6	48.5	42.2	36.2	34.4	55.1
Index (MPI)	109.4	99.5	70.0		23.4	65.0	40.9	42.6	51.4	45.5	63.6	64.1	57.5	89.6	97.4	101.7	64.5	51.8	83.1	75.4	98.2	123.1	113.6	168.7	131.3	108.2	99.0	137.4	138.0	63.9	90.8

% Chg																															
My Property	-37.0	-46.2	-60.6		-85.1	-51.1	-70.7	-70.0	-75.0	-73.3	-59.1	-56.8	-53.8	19.2	25.0	-22.2	-45.9	-60.9	-42.9	-51.2	-46.8	-41.7	-55.3	-2.3	-14.6	-32.6	-48.9	-38.3	-37.5	-76.1	-46.8
Competitive Set	29.2	14.6	20.4	-21.3	10.5	8.7	-1.0	-18.3	-10.3	-18.1	-14.1	-15.7	-7.5	9.0	6.7	-24.2	-12.7	-9.0	-25.8	-23.1	-26.4	-25.1	-41.5	-27.6	-22.9	-29.7	-28.0	-22.1	-39.8	-14.2	1.7
Index (MPI)	-51.2	-53.0	-67.3		-86.5	-55.0	-70.4	-63.3	-72.1	-67.4	-52.4	-48.7	-50.1	9.4	17.2	2.6	-38.1	-57.0	-23.0	-36.5	-27.7	-22.1	-23.5	34.9	10.8	-4.0	-29.1	-20.8	3.8	-72.1	-47.7

ADR	July																														
	1	2	3	4	5	6	7	8	9	10	11	12	13	14	15	16	17	18	19	20	21	22	23	24	25	26	27	28	29	30	31
My Property	64.22	44.88	35.59		56.27	60.79	58.17	65.03	55.42	54.60	55.76	50.65	56.03	59.44	64.50	58.08	39.96	59.90	58.71	55.56	66.12	70.34	58.74	58.81	56.28	59.56	59.05	66.05	67.57	30.80	61.92
Competitive Set	82.24	77.75	77.99	79.73	79.08	76.26	84.50	78.19	80.55	82.71	83.80	81.95	81.95	85.10	89.46	80.35	79.23	82.55	81.64	78.94	83.57	86.10	80.43	82.10	78.71	80.27	87.50	91.06	86.70	83.78	78.45
Index (ARI)	78.1	57.7	45.6		71.2	79.7	68.8	83.2	68.8	66.0	66.5	61.8	68.4	69.8	72.1	72.3	50.4	72.6	71.9	70.4	79.1	81.7	73.0	71.6	71.5	74.2	67.5	72.5	77.9	36.8	78.9

% Chg																															
My Property	-12.4	-37.4	-48.1		-20.4	-17.6	-19.6	-9.8	-19.5	-20.0	-19.2	-32.1	-22.9	-11.6	-6.5	-13.2	-41.5	-13.1	-13.3	-19.6	-8.6	-0.9	-10.3	-16.6	-20.3	-9.2	-12.8	-3.2	-5.7	-50.7	-2.7
Competitive Set	-13.5	-13.0	-14.1	-10.7	-9.9	-15.6	-7.0	-9.5	-1.8	2.5	3.5	0.2	3.1	2.0	5.3	-5.5	-8.2	-4.0	-7.3	-10.9	-3.2	2.2	-2.1	-1.1	-3.8	-14.4	-8.5	11.1	-2.3	3.4	-9.7
Index (ARI)	1.2	-28.0	-39.6		-11.7	-2.4	-13.6	-0.2	-18.0	-21.9	-22.0	-32.2	-25.2	-13.3	-11.2	-8.1	-36.3	-9.5	-6.5	-9.8	-5.5	-3.0	-8.4	-15.7	-17.2	6.0	-4.7	-12.8	-3.4	-52.3	7.7

RevPAR	July																														
	1	2	3	4	5	6	7	8	9	10	11	12	13	14	15	16	17	18	19	20	21	22	23	24	25	26	27	28	29	30	31
My Property	37.25	18.85	9.25		7.88	26.75	13.96	15.61	11.08	13.10	20.07	19.25	20.17	36.85	45.15	24.39	15.98	21.56	28.18	23.34	33.06	39.39	19.97	50.57	39.39	34.55	28.35	38.31	33.78	6.78	30.96
Competitive Set	43.58	32.82	28.96	30.08	47.36	51.60	49.59	44.01	31.35	43.59	47.42	48.58	51.28	58.86	64.29	33.20	49.10	57.34	47.17	43.96	42.53	39.18	24.08	41.85	41.95	43.02	42.44	38.44	31.41	28.85	43.22
Index (RGI)	85.5	57.4	32.0		16.6	51.8	28.2	35.5	35.4	30.1	42.3	39.6	39.3	62.6	70.2	73.5	32.6	37.6	59.7	53.1	77.7	100.5	82.9	120.9	93.9	80.3	66.8	99.6	107.6	23.5	71.6

% Chg																															
My Property	-44.8	-66.3	-79.6		-88.2	-59.7	-76.5	-72.9	-79.9	-78.7	-67.0	-70.7	-64.4	5.4	16.9	-32.5	-68.4	-66.0	-50.5	-60.7	-51.4	-42.2	-59.9	-18.5	-32.0	-38.8	-55.5	-40.3	-41.0	-88.2	-48.2
Competitive Set	11.8	-0.3	3.5	-29.7	-0.4	-8.3	-7.9	-26.1	-12.0	-16.1	-11.1	-15.6	-4.7	11.1	12.4	-28.3	-19.8	-12.6	-31.2	-31.5	-28.8	-23.5	-42.8	-28.3	-25.9	-39.9	-34.1	-13.5	-41.2	-11.3	-8.2
Index (RGI)	-50.6	-66.2	-80.2		-88.1	-56.1	-74.4	-63.4	-77.1	-74.6	-62.8	-65.3	-62.7	-5.1	4.0	-5.8	-60.6	-61.1	-28.0	-42.7	-31.7	-24.4	-29.9	13.7	-8.2	1.8	-32.4	-31.0	0.3	-86.7	-43.6

2023 © CoStar Group. This STR Report is a publication of STR, LLC and STR Global, Ltd., CoStar Group companies, and is intended solely for use by paid subscribers. The information in the STR Report is provided on an "as is" and "as available" basis and should not be construed as investment, tax, accounting or legal advice. Reproduction or distribution of this STR Report, in whole or part, without written permission is prohibited and subject to legal action. If you have received this report and are NOT a subscriber to this STR Report, please contact us immediately. Source: 2023 STR, LLC / STR Global, Ltd. trading as "STR".



How can we assist you?

Glossary:

For all STR definitions, please click here or visit www.str.com/data-insights/resources/glossary

Frequently Asked Questions (FAQ):

For all STR FAQs, please click here or visit www.str.com/data-insights/resources/FAQ

For additional support, please [contact](#) your regional office.

For the latest in industry news, visit HotelNewsNow.com.

To learn more about the Hotel Data Conference, visit HotelDataConference.com.