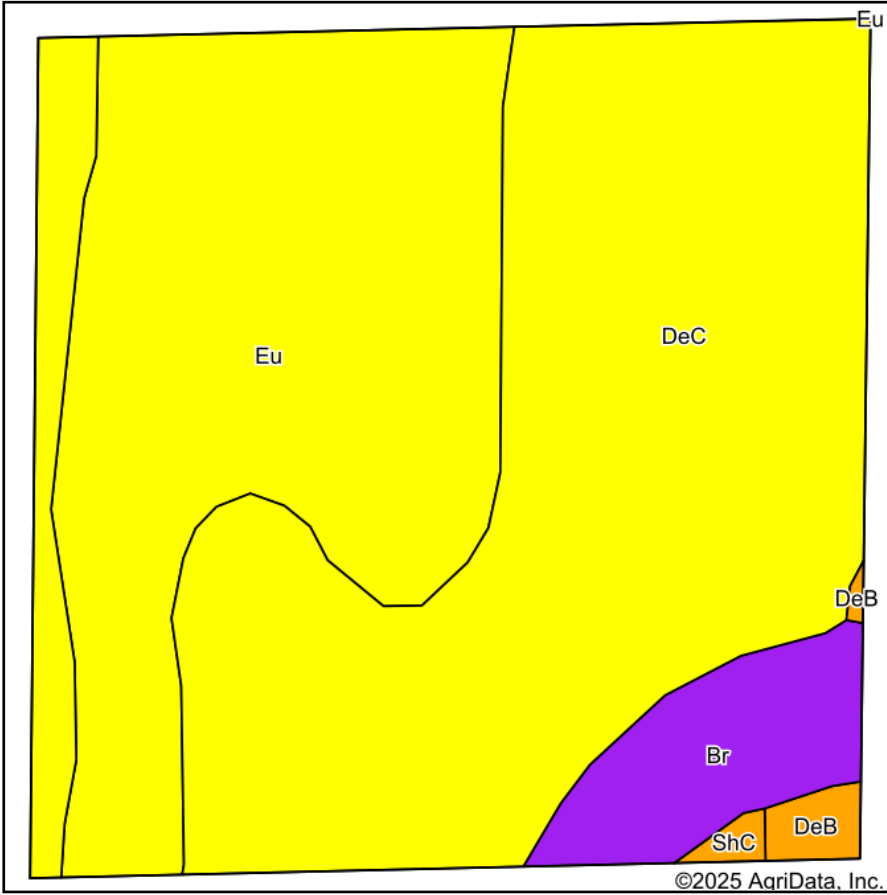
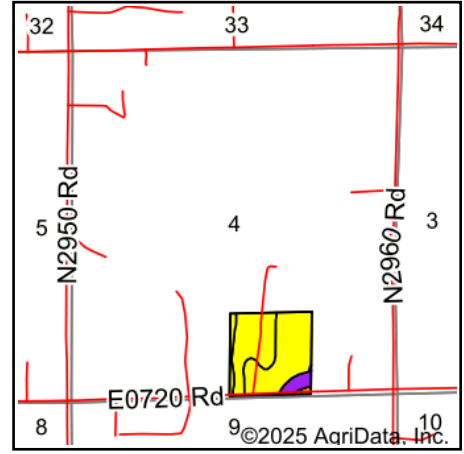


Soils Map



Soils data provided by USDA and NRCS.

©2025 AgriData, Inc.



State: **Oklahoma**
 County: **Kingfisher**
 Location: **4-17N-5W**
 Township: **Hennessey**
 Acres: **39.55**
 Date: **1/16/2025**



Maps Provided By:



© AgriData, Inc. 2023

www.AgriDataInc.com



Area Symbol: OK073, Soil Area Version: 20

Code	Soil Description	Acres	Percent of field	Non-Irr Class Legend	Non-Irr Class *c	Irr Class *c	Range Production (lbs/acre/yr)	Alfalfa hay Tons	Caucasian bluestem AUM	Cotton lint Lbs	Grain sorghum Bu	Improved bermudagrass AUM	Introduced bluestem AUM	Peanuts Lbs	Rye Bu
DeC	Dougherty-Eufaula complex, 3 to 8 percent slopes	21.84	55.2%		Ive		3995			148	23		4	945	12
Eu	Eufaula fine sand, 5 to 15 percent slopes	14.58	36.9%		Ive	Ive	3400		3		2		3	2	
Br	Ashport, Port and Pulaski soils, 0 to 1 percent slopes, frequently flooded	2.57	6.5%		Vw		6247						8		
DeB	Dougherty-Eufaula complex, 0 to 3 percent slopes	0.40	1.0%		Ille		3950			165	26		4	990	2

Soils data provided by USDA and NRCS.



Code	Soil Description	Acres	Percent of field	Non-Irr Class Legend	Non-Irr Class *c	Irr Class *c	Range Production (lbs/acre/yr)	Alfalfa hay Tons	Caucasian bluestem AUM	Cotton lint Lbs	Grain sorghum Bu	Improved bermudagrass AUM	Introduced bluestem AUM	Peanuts Lbs	Rye Bu
ShC	Lovedale fine sandy loam, 3 to 5 percent slopes	0.16	0.4%		IIIe		3223	3			44	6	5		
Weighted Average					4.05	*-	3918.4	*-	1.1	83.4	13.9	3.9	0.8	531.9	6.6

*n: The aggregation method is "Weighted Average using all components"

*c: Using Capabilities Class Dominant Condition Aggregation Method

*- Irr Class weighted average cannot be calculated on the current soils data due to missing data.