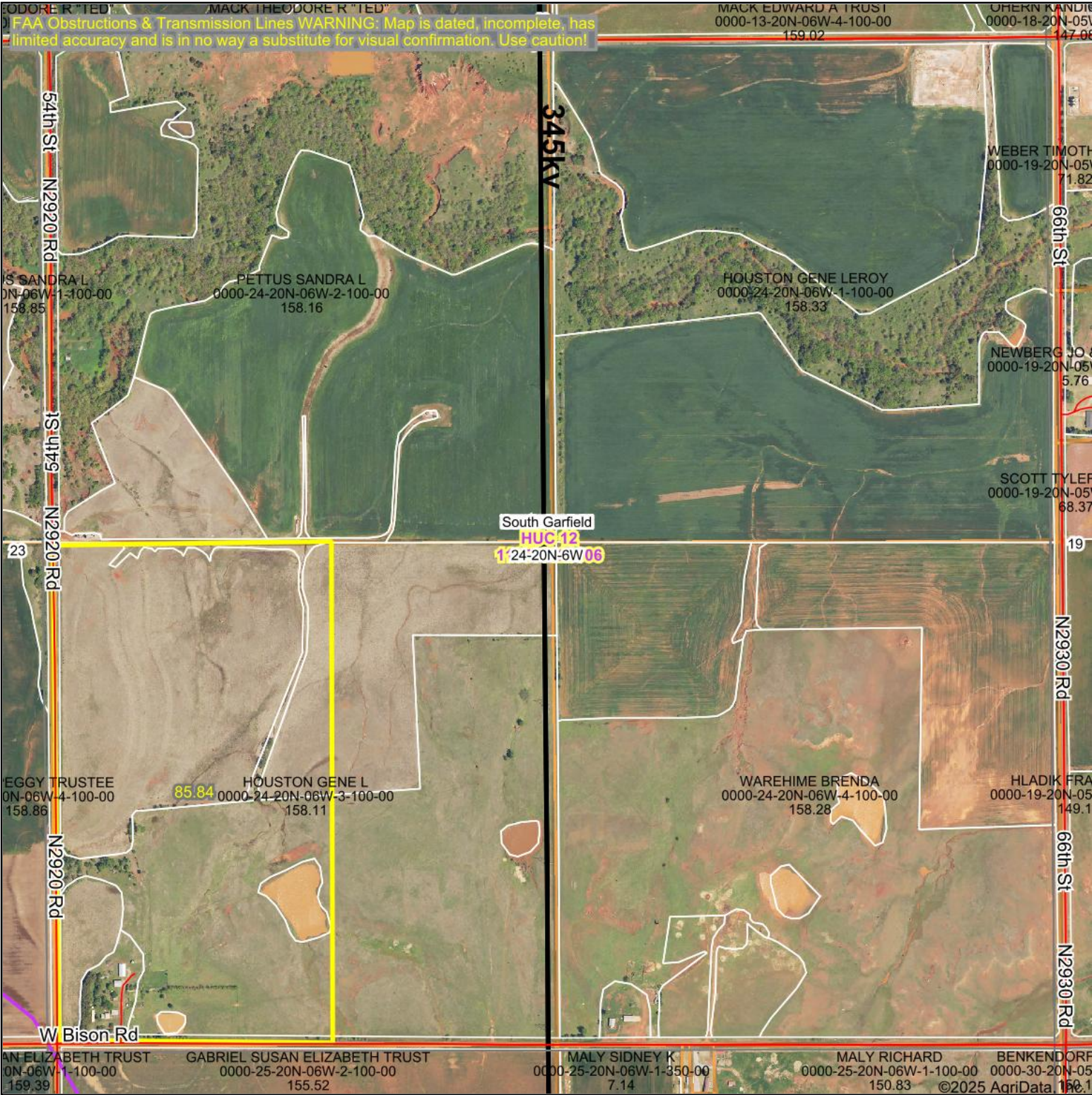


Aerial Map



Boundary Center: 36° 11' 30.19, -97° 47' 51.32

0ft 813ft 1626ft

24-20N-6W  
Garfield County  
Oklahoma



Maps Provided By:  
  
CUSTOMIZED ONLINE MAPPING  
© AgriData, Inc. 2023 www.AgriDataInc.com

9/18/2025