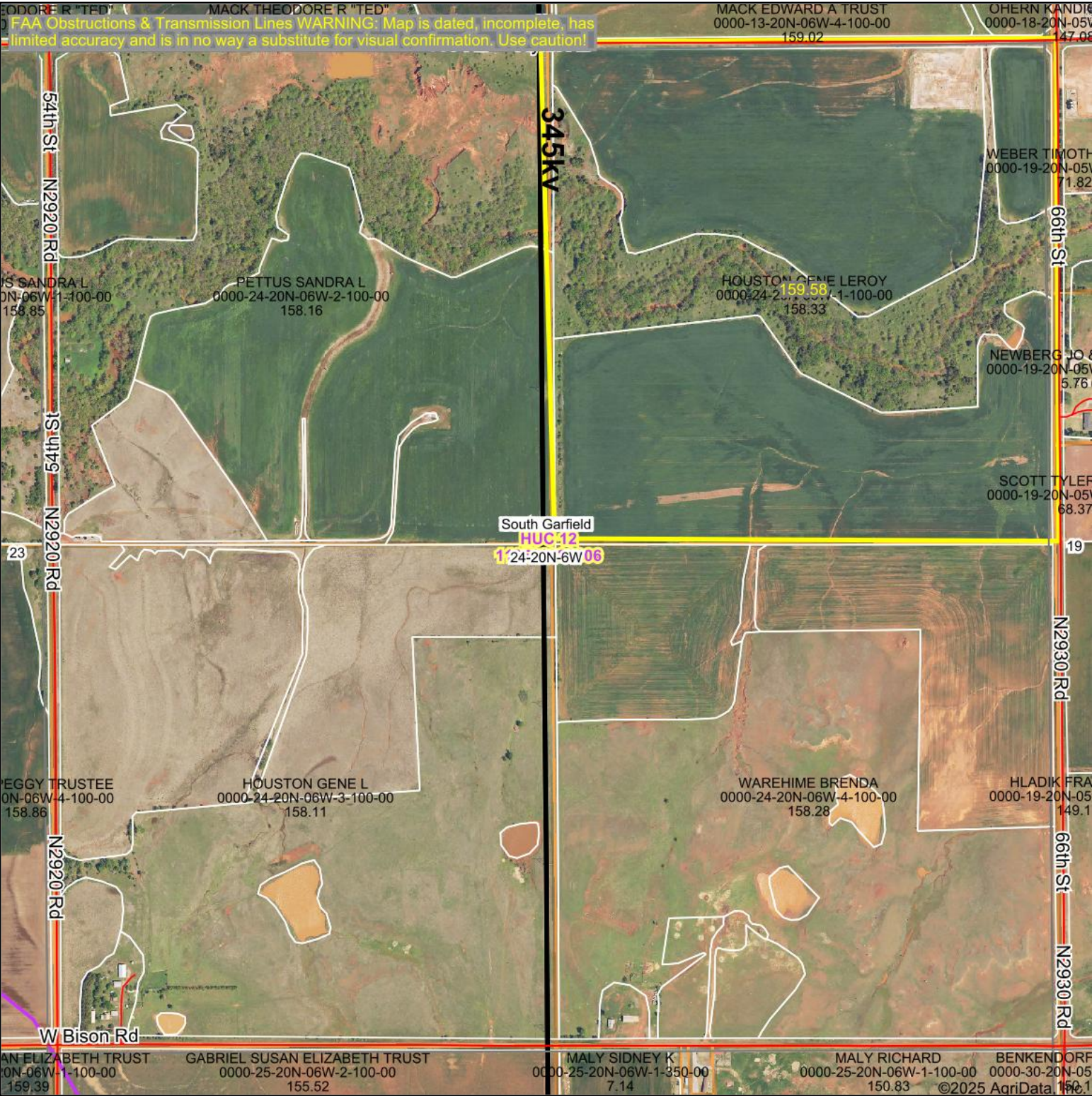


Aerial Map



Boundary Center: 36° 11' 55.84, -97° 47' 12.28

0ft 815ft 1631ft

24-20N-6W
Garfield County
Oklahoma



Maps Provided By:
surety
CUSTOMIZED ONLINE MAPPING
© AgriData, Inc. 2023 www.AgriDataInc.com

9/18/2025