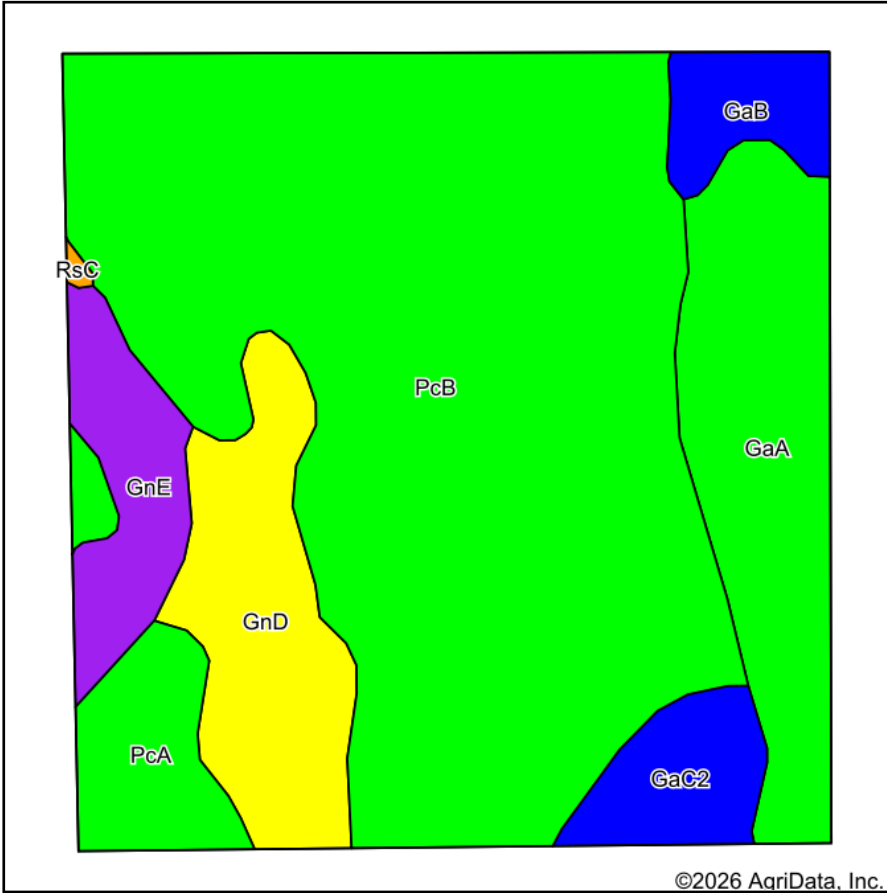
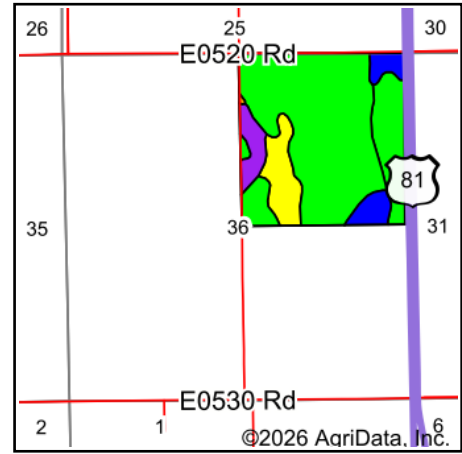


Soils Map



Soils data provided by USDA and NRCS.



State: **Oklahoma**
 County: **Garfield**
 Location: **36-21N-7W**
 Township: **South Garfield**
 Acres: **151.23**
 Date: **4/7/2026**



Maps Provided By:



© AgriData, Inc. 2025

www.AgriDataInc.com



Area Symbol: OK047, Soil Area Version: 22

Code	Soil Description	Acres	Percent of field	Non-Irr Class Legend	Non-Irr Class *c	Irr Class *c	Range Production (lbs/acre/yr)	Alfalfa hay Tons	Barley Bu	Caucasian bluestem AUM	Cotton lint Lbs	Grain sorghum Bu	Improved bermudagrass AUM	Introduced bluestem AUM	Oats Bu
PcB	Pond Creek silt loam, 1 to 3 percent slopes	90.64	59.9%		I	I	4747	4			32	50	5	5	
GaA	Pond Creek silt loam, 0 to 1 percent slopes, deep	20.26	13.4%		le		4705	4	42		435	49	6	5	
GnD	Kingfisher-Ironmound complex, 5 to 8 percent slopes	15.06	10.0%		Ive		4008						3	3	
GnE	Kingfisher-Ironmound complex, 8 to 20 percent slopes	7.80	5.2%		Vle		3931						3		
PcA	Pond Creek silt loam, 0 to 1 percent slopes	6.94	4.6%		le	le	4747	4			58	50	5	5	

Soils data provided by USDA and NRCS.



Code	Soil Description	Acres	Percent of field	Non-Irr Class Legend	Non-Irr Class *c	Irr Class *c	Range Production (lbs/acre/yr)	Alfalfa hay Tons	Barley Bu	Caucasian bluestem AUM	Cotton lint Lbs	Grain sorghum Bu	Improved bermudagrass AUM	Introduced bluestem AUM	Oats Bu
GaC2	Grant silt loam, 3 to 5 percent slopes, eroded	5.77	3.8%		Ile	Ile	0			5	248	30	5	4	
GaB	Grant silt loam, 1 to 3 percent slopes, shallow	4.56	3.0%		Ile		4705	2	2		346	48	6	5	
RsC	Piedmont silt loam, 3 to 5 percent slopes	0.20	0.1%		IIle		4003		26		15	4	4		32
Weighted Average					1.63	*-	4442.3	3.2	5.7	0.2	100	41.4	4.9	4.5	*-

*n: The aggregation method is "Weighted Average using all components"

*c: Using Capabilities Class Dominant Condition Aggregation Method

*- Irr Class weighted average cannot be calculated on the current soils data due to missing data.